

# Natasha

THE RESIDENCES



WELCOME TO NATASHA  
THE RESIDENCES, ENJOY  
A BEAUTIFULLY CURATED  
LIFESTYLE IN THE HEART  
OF THE ENTERTAINMENT  
DISTRICT, NEATLY TUCKED INTO  
ADELAIDE AND JOHN. STYLISH,  
SOPHISTICATED, TAILORED  
DESIGN FOR DISCERNING  
TASTEMAKERS. INSPIRED BY THE  
CITY'S ULTIMATE BON VIVANT.

# TURN LIFE ON

WITH A FINGER ON THE  
PULSE OF THE CITY  
AND A SAVOIR FAIRE  
FOR WHAT'S IN STYLE,  
NATASHA DOESN'T  
FOLLOW TRENDS. SHE  
DEFINES THEM. NATASHA  
THE RESIDENCES SETS  
THE STAGE FOR A SUPER-  
CHARGED, SUPER-  
CONNECTED LIFESTYLE.

BROUGHT TO LIFE  
THROUGH VISIONARY  
ARCHITECTURE FROM  
BDP QUADRANGLE,  
THE EXTRAORDINARY  
AESTHETIC OF STUDIO  
MUNGE, AND THE  
ARTISTIC PRESENCE  
OF PROLIFIC NEO-POP  
ARTIST, PETER TUNNEY.





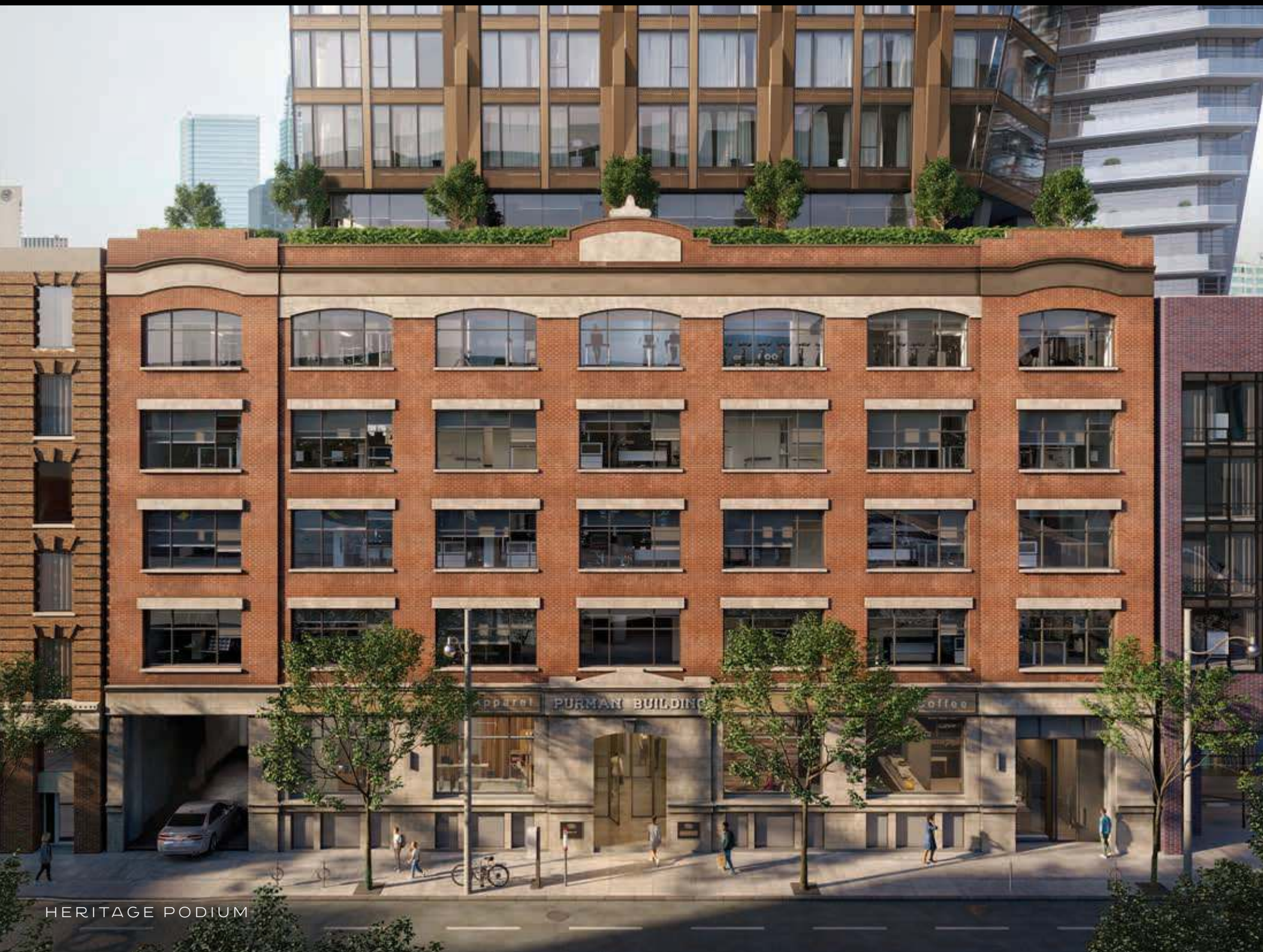
IN THE EARLY 20TH CENTURY  
A NEW ERA OF DESIGN WAS  
SWEEPING ACROSS THE  
CONTINENT, A PERIOD DEFINED  
BY MAJESTIC SKYSCRAPERS,  
MODERNIST NEW MATERIALS,  
AND UNPRECEDENTED HUMAN  
WELLBEING. TODAY, THAT  
MACHINE AGE AESTHETIC IS  
REINTERPRETED FOR THE  
MODERN AGE AT NATASHA  
THE RESIDENCES.

EQUAL PARTS  
SOPHISTICATION,  
POWER, AND  
MYSTERIOUS  
**ALLURE**

IMAGINE A BUILDING  
THAT SEEMS TO  
SHAPESHIFT BEFORE  
YOUR VERY EYES - IN  
SOME PLACES CURVED  
AND GENTLY TAPERED,  
IN OTHERS, BOLD AND  
STRONG, GROUNDED IN  
HISTORY, A GLEAMING  
NEW TOWER SITS ATOP  
A STATELY HERITAGE  
STRUCTURE. FOLDED  
METAL PANELS

ACCESSORIZE THE  
FAÇADE, CREATING  
SLENDER BANDS  
REMINISCENT OF  
A VINTAGE ROLEX  
WATCHBAND THAT  
INVITES A DYNAMIC PLAY  
OF SHADOW AND LIGHT.  
  
THE COLOUR IS  
RICH, COMPLEX, AND  
INDEFINABLE, AT TIMES  
APPEARING COPPER,

BEFORE EVOLVING INTO  
A DEEP, DARK BRONZE.  
THE TRANSITION  
BETWEEN BASE AND  
TOWER CAPTURES A  
SENSE OF ENERGY AND  
BALANCE, AND ECHOES  
AT THE APEX WHERE  
THE SHIMMERING BANDS  
GENTLY TAPER AS THEY  
MEET THE SKY.



HERITAGE PODIUM

“

NATASHA IS NOT  
SIMPLY A DESIGN;  
IT DEFINES A NEW  
STYLE - A BALANCE  
OF STRONG AND  
SOFT, MASCULINE  
AND FEMININE,  
PAST, PRESENT, AND  
FUTURE. A NEW AGE  
IN URBAN LIVING.

”



NATASHA'S SECRET TO  
HAPPINESS? LOVE WHAT  
YOU DO, WHERE YOU  
SPEND YOUR TIME, AND  
WHO YOU SPEND IT WITH.

# INTEGRATE YOUR LIFE

IT'S THE ETHOS SHE  
FOLLOWS IN HER OWN  
HOME, CREATING A  
SPACE IMBUED WITH  
INSPIRING ARTWORK,  
SOOTHING SETTINGS,  
AND REMINDERS FROM  
JOURNEYS, NEAR AND  
FAR. IT'S ALSO AN  
ETHOS THAT'S EASY TO

FOLLOW AT NATASHA  
THE RESIDENCES,  
WHERE A VARIETY OF  
THOUGHTFUL AMENITIES,  
DESIGNED FOR EVERY  
PART OF YOUR LIFE,  
COME TOGETHER UNDER  
ONE ROOF FOR FULLY  
INTEGRATED LIVING.





# SIXTH FLOOR AMENITIES

TURNING THE STANDARD RULES ON THEIR HEAD, THE GROUND FLOOR LOBBY IS A SIMPLE DISCREET ENTRYWAY THAT WHISKS YOU UP TO THE SIXTH FLOOR SKY LOBBY AND CONCIERGE. STRUTTING THROUGH REEDED GLASS DOORS, OVER DARK HERRINGBONE HARDWOOD FLOORS FRAMED WITH MARBLE BORDERS, GUESTS WILL GUSH OVER THE LAVISH SPACE CURATED WITH CULTURE AND MYSTERY.





SKY LOBBY



BESPOKE WALLPAPER BY PETER TUNNEY ADORNS THE FOYER WITH GRAPHIC ARTISTRY, WHILE A TALL ABSTRACT SCULPTURE BY KELLY WEARSTLER LEADS THE EYE TO THE LUSH TERRACE BEYOND. CONTEMPORARY CROWN MOULDINGS AND RIBBED TABOUR PANELLING DETAILS ARE SOFTLY LIT BY THE SOOTHING COVE LIGHTING, BRINGING WARMTH AND SOPHISTICATION TO THE TIMELESS SPACE.

SKY LOBBY



ARTWORK BY PETER TUNNEY

PIANO LOUNGE

BEYOND THE SKY LOBBY, THE AMENITIES EXPAND AND MULTIPLY. A COLLECTION OF TASTEFULLY-FURNISHED LOUNGES SET THE STAGE FOR PRIVATE SCREENINGS AND INTIMATE DIALOGUES. IN THE PIANO LOUNGE, A CURVED SLATTED SCREEN BEAUTIFULLY FRAMES THE SPACE WHERE A SELF-PLAYING, PETER TUNNEY-DESIGNED PIANO CHARMS PASSERSBY. THE GLOSSY BLACK SURFACE IS ACCENTED WITH RED LACQUERED DETAIL AND A REMINDER THAT GRATITUDE IS THE KEY TO LIVING LIFE TO THE FULLEST, WITH JUST A LITTLE BIT OF "ATTITUDE".





PRIVATE DINING ROOM



PRIVATE DINING ROOM

FROM AL FRESCO PIZZA PARTIES TO THE MOST FESTIVE OF DINNER SOIRÉES, YOU'LL FIND A SPACE PERFECTLY SUITED TO EVERY OCCASION. A GRAND PRIVATE DINING ROOM CONNECTS TO AN INDOOR/OUTDOOR KITCHEN FEATURING AN INTEGRATED PIZZA OVEN AND U-SHAPED BAR. ON THE OTHER SIDE OF THE INNOVATIVE RETRACTABLE WALL, A WRAP-AROUND TERRACE OFFERS AN OUTDOOR URBAN OASIS FOR ALL AGES.



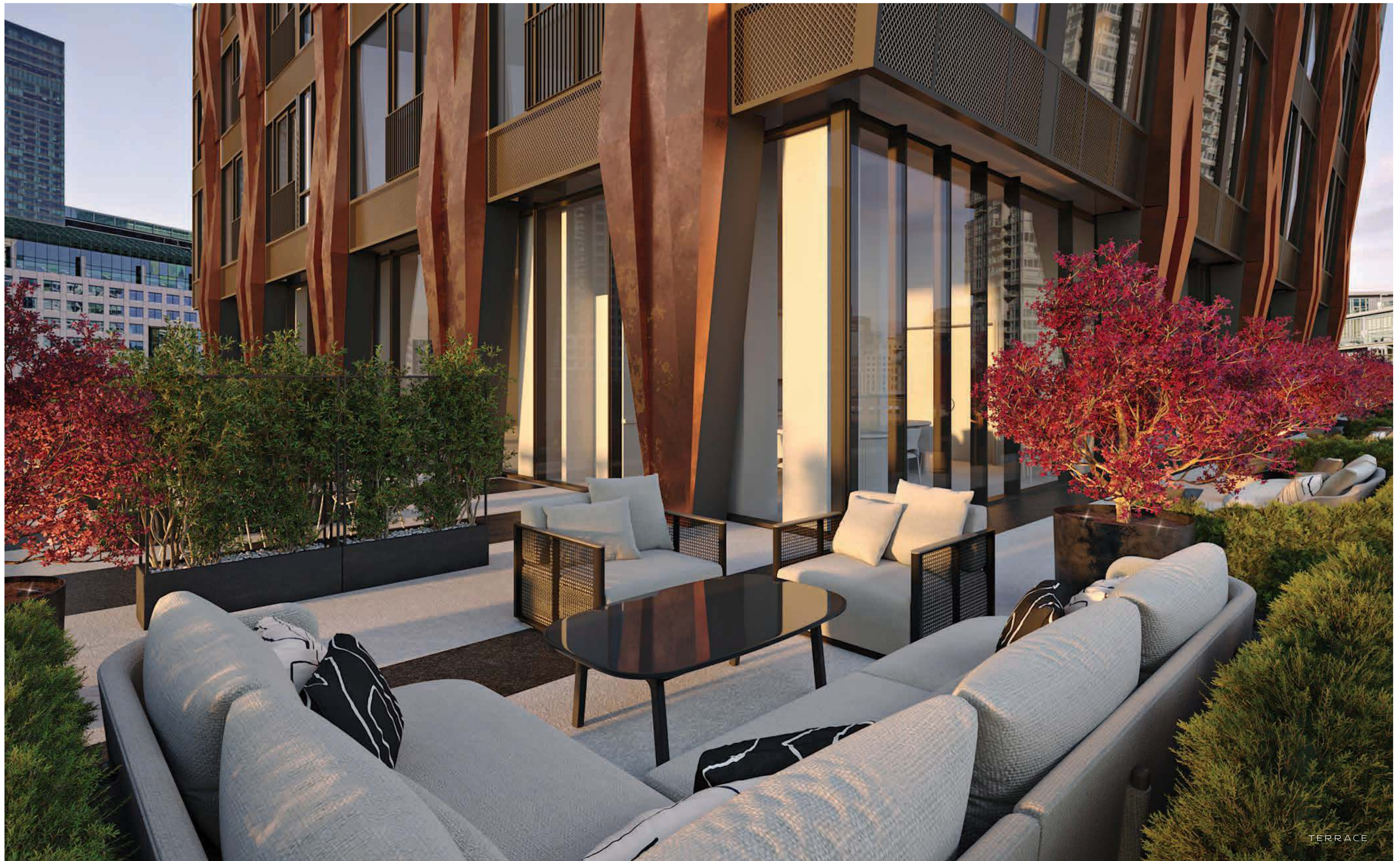
INDOOR/OUTDOOR KITCHEN WITH PIZZA OVEN



TERRACE

PICNIC AREAS AND A CHILDREN'S IMAGINATION ZONE ENCOURAGE OUTDOOR PLAY. UNDER A DRAMATIC CIRCULAR PERGOLA, A ROARING FIRE PIT BRINGS PEOPLE TOGETHER WHILE, IN NEIGHBOURING INTIMATE LOUNGES, WHISPERS AND LAUGHTER ARE CARRIED BY THE WIND THROUGH WELL-MANICURED HEDGES AND LUSHLY LANDSCAPED PLANTERS. RELAXED, YET SOPHISTICATED, THIS IS THE BACKDROP FOR THE ULTIMATE URBAN LIFESTYLE.

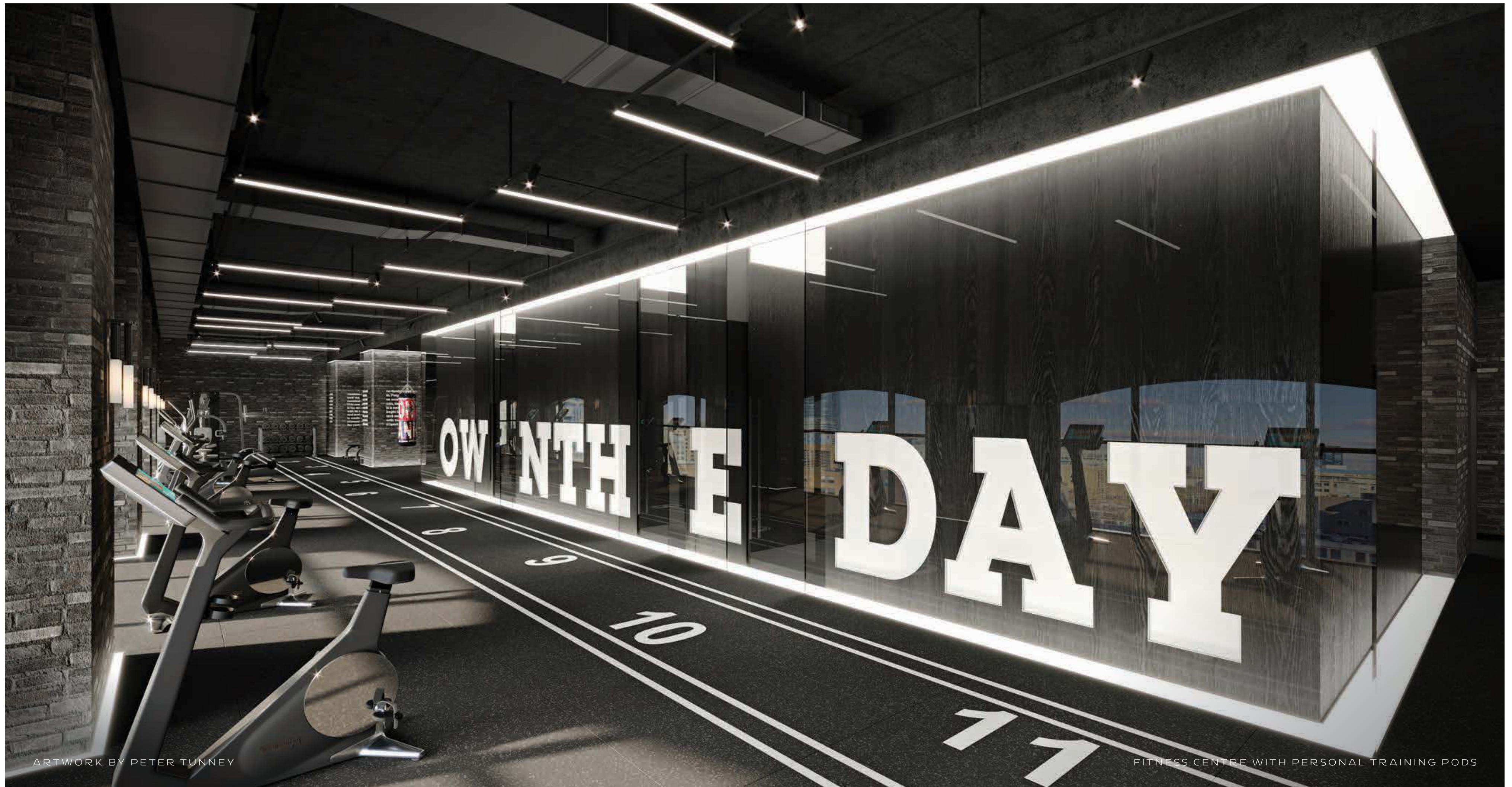




# FIFTH FLOOR AMENITIES

ON THE FIFTH FLOOR, BOASTING AN ALL-BLACK PALETTE OF TEXTURALLY CONTRASTING BRICK, METAL, AND RUBBER, AN ELITE INDUSTRIAL-INSPIRED GYM WILL SEDUCE FITNESS ENTHUSIASTS WITH STATE-OF-THE-ART CARDIO AND WEIGHT TRAINING EQUIPMENT LIT BY GRAPHIC TUBULAR FIXTURES.





ARTWORK BY PETER TUNNEY

FITNESS CENTRE WITH PERSONAL TRAINING PODS

THREE INDIVIDUAL WORKOUT PODS OFFER PRIVACY FOR PERSONAL TRAINING SESSIONS AND CONNECT YOU TO VIRTUAL CLASSES WITH THE VERY BEST TRAINERS AROUND THE WORLD. THE MOTIVATIONAL REMINDER TO "OWN THE DAY" SPANS THE ROOM TO ENERGIZE THE SPACE FURTHER.

Write it on  
your heart that  
every day is the  
best day in the  
year. He is rich  
who owns the  
day, and no one  
owns the day  
who allows

It to be invaded  
with fear and  
anxiety. Finish  
every day and  
be done with it.  
You have done  
what you could.  
Some blunders  
and absurdities

DAY

ONE  
TWO  
THREE  
FOUR  
FIVE  
SIX  
SEVEN  
EIGHT  
NINE  
TEN  
ELEVEN  
TWELVE

3

4

5

6

7

8

9

10

11

12

13

14

15

16

17

18

19

20

21

22

23

24

25

26

27

28

29

30

31

32

33

34

35

36

37

38

39

40

41

42

43

44

45

46

47

48

49

50

51

52

53

54

55

56

57

58

59

60

61

62

63

64

65

66

67

68

69

70

71

72

73

74

75

76

77

78

79

80

81

82

83

84

85

86

87

88

89

90

91

92

93

94

95

96

97

98

99

100

101

102

103

104

105

106

107

108

109

110

111

112

113

114

115

116

117

118

119

120

121

122

123

124

125

126

127

128

129

130

131

132

133

134

135

136

137

138

139

140

141

142

143

144

145

146

147

148

149

150

151

152

153

154

155

156

157

158

159

160

161

162

163

164

165

166

167

168

169

170

171

172

173

174

175

176

177

178

179

180

181

182

183

184

185

186

187

188

189

190

191

192

193

194

195

196

197

198

199

200

201

202

203

204

205

206

207

208

209

210

211

212

213

214

215

216

217

218

219

220

221

222

223

224

225

226

227

228

229

230

231

232

233

234

235

236

237

238

239

240

241

242

243

244

245

246

247

248

249

250

251

252

253

254

255

256

257

258

259

260

261

262

263

264

265

266

267

268

269

270

271

272

273

274

275

276

277

278

279

280

281

282

283

284

285

286

287

288

289

290

291

292

293

294

295

296

297

298

299

300

301

302

303

304

305

306

307

308

309

310

311

312

313

314

315

316

317

318

319

320

321

322

323

324

325

326

327

328

329

330

331

332

333

334

335

336

337

338

339

340

341

342

343

344

345

346

347

348

349

350

351

352

353

354

355

356

357

358

359

360

361

362

363

364

365

366

367

368

369

370



INFRARED SAUNA

FOR CORE TRAINING, DEEP STRETCHING, AND MUSCLE RELAXATION, AN INFRARED SAUNA AND YOGA STUDIO PROVIDES A CALMING YIN TO THE DYNAMIC YANG.



INFRARED SAUNA



PET SPA



SOCIAL MEDIA STUDIO WITH GREEN SCREEN

“  
AN INDOOR GROOMING  
SALON AND PET  
PROMENADE ALLOW  
EVERY FURRY FAMILY  
MEMBER TO BEAUTIFY  
AND STRUT IN STYLE.  
”

ELSEWHERE ON THE FIFTH FLOOR, A SOCIAL  
MEDIA STUDIO COMPLETE WITH GREEN SCREEN  
AND KITCHENETTE, PROVIDES THE PERFECT SPACE  
FOR INFLUENCERS, ARTISTS, MUSICIANS, FOODIES,  
FASHIONISTAS, AND TIKTOKERS ALIKE TO PRODUCE  
THEIR EVERYDAY CONTENT FROM THE COMFORT OF  
HOME. AND OUR FOUR-LEGGED FRIENDS HAVEN'T BEEN  
FORGOTTEN - THEY WILL BE WELL TAKEN CARE OF IN  
THE PET SPA AND PROMENADE.



# SEVENTH FLOOR AMENITIES

YOU DON'T REACH THE TOP WITHOUT HARD WORK, THAT'S WHY, WITH FOUR SEMI-PRIVATE WORKSTATIONS, A MEETING ROOM, A PARTY ROOM AND READING LOUNGES, THE SEVENTH FLOOR IS DEDICATED TO NETWORKING AND CO-WORKING. THERE'S ALSO A DESIGN-CENTRIC LAUNDRY LOUNGE TO TURN YOUR USUAL SOLO LAUNDRY NIGHT INTO A SOCIAL EVENT TO MIX, MINGLE AND GET TIDY. THIS SPOT MIXES OLD SCHOOL FUN AND A SENSE OF COMMUNITY WITH PLAYFUL SHAPES AND VENDING MACHINES THAT DISPENSE UNEXPECTED DELIGHTS.



LAUNDRY LOUNGE

WHO KNEW THAT DOING YOUR LAUNDRY COULD BE A SOCIAL EVENT? FOR LARGER LOADS, OR FOR WHEN YOU FEEL LIKE SOME SMALL TALK WHILE SEPARATING YOUR COLOURS FROM YOUR WHITES, HEAD TO THE COMMUNAL LAUNDRY ROOM FOR SOME GOOD CLEAN FUN.

*Think before you do  
or plan b you go*

# AMENITY PLANS

## 5<sup>TH</sup> FLOOR

1. FITNESS CENTRE
2. PERSONAL TRAINING PODS
3. INFRARED YOGA STUDIO
4. INFRARED SAUNA
5. WASHROOMS AND CHANGE ROOMS
6. PET SPA
7. PET WALK
8. SOCIAL MEDIA STUDIO
9. MANAGEMENT OFFICE



## 6<sup>TH</sup> FLOOR

1. SKY LOBBY
2. ELEVATORS
3. LOBBY LOUNGE
4. PIANO LOUNGE
5. PRIVATE DINING ROOM
6. INDOOR PIZZA/ OUTDOOR KITCHEN LOUNGE
7. PRIVATE OUTDOOR GARDEN
8. OUTDOOR LOUNGING TERRACE
9. OUTDOOR BBQ LOUNGE
10. INTERACTIVE CHILDREN PLAY AREA
11. PARCEL ROOM



## 7<sup>TH</sup> FLOOR

1. OUTDOOR TERRACE
2. LAUNDRY LOUNGE
3. WI-FI WORK-SPACE LOUNGE
4. PRIVATE MEETING ROOM
5. LOUNGE





DISCOVER A WORLD WHERE  
LUXURY BECOMES REALITY,  
WHERE BLACK AND WHITE  
COMPLETE EACH OTHER  
LIKE THE PERFECT LEATHER  
JACKET OVER A LITTLE BLACK  
DRESS. CONFIDENT, SLEEK,  
AND SEXY, THE INTERIORS OF  
NATASHA THE RESIDENCES  
DELIVER AN EXPERT MIX OF  
SENSUOUS MATERIALS AND  
BOLD DESIGN.

# NEVER BE BORING

RANGING FROM  
BRILLIANTLY-  
DISTRIBUTED STUDIOS TO  
EXPANSIVE 3-BEDROOM  
SUITES, EACH UNIT IS  
DESIGNED TO OFFER A  
CALM RETREAT FROM  
THE DAILY HUSTLE.  
PICTURE-PERFECT  
KITCHENS CELEBRATE  
GREAT TASTE AND A  
PASSION FOR GOURMET  
CUISINE WITH MODERN  
CABINETRY THAT  
CONCEALS INTEGRATED  
APPLIANCES AND

KEEPS SPACES PHOTO-  
READY. SPA-INSPIRED  
BATHROOMS MELT AWAY  
ANY TENSION. SPACIOUS  
LIVING ROOMS WITH  
FLOOR-TO-CEILING  
WINDOWS ALWAYS  
HAVE THE PERFECT  
LIGHT. A CHOICE  
OF DESIGNER, PRE-  
SELECTED UPGRADES  
MAKE IT SIMPLE TO  
ELEVATE YOUR LIVING  
EXPERIENCE TO NEW  
HEIGHTS.



# FEATURES & FINISHES

## BUILDING FEATURES

- STREET LEVEL ENTRY
- SKY LOBBY [SIXTH FLOOR]
- PARKING ELEVATOR
- PARCEL ROOM
- DISTRICT COOLING AND HEATING
- INDIVIDUAL BICYCLE STORAGE

## 5<sup>TH</sup> FLOOR

- FULLY EQUIPPED FITNESS CENTRE WITH PERSONAL TRAINING PODS
- INFRARED YOGA STUDIO
- INFRARED SAUNA WITH OUTDOOR LOUNGE DAY BED AREA
- WASHROOMS AND CHANGE ROOMS
- LUXURIOUS PET SPA
- PET WALK
- SOCIAL MEDIA STUDIO WITH GREEN SCREEN
- MANAGEMENT OFFICE

## 6<sup>TH</sup> FLOOR

- SKY LOBBY WITH 24 HOUR CONCIERGE
- THREE HIGH SPEED ELEVATORS
- LOBBY LOUNGE
- PIANO LOUNGE
- PRIVATE DINING ROOM
- INDOOR / OUTDOOR KITCHEN LOUNGE WITH GAS PIZZA OVEN
- PRIVATE OUTDOOR GARDEN WITH GAZEBO AND GAS FIREPLACE
- OUTDOOR SWING CHAIR LOUNGING TERRACE
- OUTDOOR BBQ LOUNGE
- INTERACTIVE CHILDREN PLAY AREA

## 7<sup>TH</sup> FLOOR

- OUTDOOR TERRACE
- LAUNDRY LOUNGE
- WI-FI WORK-SPACE LOUNGE
- PRIVATE MEETING ROOM

## SUITE FINISHES

- APPROXIMATELY 9' CEILINGS \*\*\* \*\*\*\*\*
- EXTERIOR GLASS SLIDING DOORS\*\*\*
- SOLID CORE ENTRY DOOR WITH HARDWARE AND SECURITY VIEWER
- INDIVIDUALLY 4 PIPE FAN COILS
- LAMINATE FLOORING THROUGHOUT
- MIRROR SLIDERS ON CLOSET DOORS\*\*\*
- IN-SUITE SMOKE DETECTOR
- IN-SUITE CARBON MONOXIDE DETECTOR
- LAUNDRY WITH WHITE STACKED WASHER / DRYER VENTED TO EXTERIOR
- CERAMIC FLOORING IN LAUNDRY AREA
- INTERIOR WALLS PAINTED WHITE QUALITY LATEX\*

## KITCHEN

- LAMINATE FLOORING\*
- BLACK STAINLESS STEEL BUILT-IN CONVECTION SPEED OVEN WITH MICROWAVE FUNCTION AND BLACK ELECTRIC GLASS COOKTOP
- STAINLESS STEEL HOOD FAN
- INTEGRATED BOTTOM-FREEZER REFRIGERATOR AND DISHWASHER
- SELECTION OF DESIGNER SERIES KITCHEN CABINETRY\* \*\*\*\*\*
- POT LIGHTS
- UNDER CABINET INTEGRATED LIGHTING
- GRANITE OR CORIAN COUNTERTOP AND BACKSPLASH\*
- STAINLESS STEEL SINK WITH SINGLE LEVER FAUCET AND PULL-OUT VEGETABLE SPRAY\*\*\*

## GENERAL:

### MAIN BATHROOM

- PORCELAIN FLOORING\* \*\*\*
- INTEGRATED CULTURED STONE COUNTERTOP
- SAFETY PRESSURE-BALANCING VALVE IN TUB\*\*
- 5' SOAKER TUB OR SHOWER WITH GLASS PANEL WITH CHROME FAUCETS\*\*\*
- DESIGNER SELECTED PLUMBING FIXTURES AND CABINETRY\*\*
- PORCELAIN WALL TILE IN TUB OR SHOWER AREA \*\*\*
- EXTERIOR VENTED EXHAUST FAN
- ENTRY PRIVACY LOCK

### BATHROOM

- PORCELAIN FLOORING \* \*\*\*
- INTEGRATED CULTURED STONE COUNTERTOP
- SAFETY PRESSURE-BALANCING VALVE IN TUB\*\*
- 5' SOAKER TUB OR SHOWER WITH GLASS PANEL WITH CHROME FAUCETS\*\*\*
- DESIGNER SELECTED PLUMBING FIXTURES AND CABINETRY\*\*
- PORCELAIN WALL TILE IN TUB OR SHOWER AREA \*\*\*
- EXTERIOR VENTED EXHAUST FAN
- ENTRY PRIVACY LOCK

## ELECTRICAL FEATURES

- ROUGH IN CEILING LIGHT OUTLETS IN DINING ROOM
- ROUGH IN CEILING LIGHT OUTLETS IN BEDROOM
- LIGHTING FIXTURES IN BATHROOMS\*\*
- LIGHTING FIXTURE IN HALLWAY
- CABLE TELEVISION OUTLETS IN DEN, LIVING ROOM AND MAIN BEDROOM\*\*
- TELEPHONE OUTLETS IN LIVING ROOM AND MAIN BEDROOM\*\*
- SERVICE PANEL WITH CIRCUIT BREAKER
- USB RECEPTACLE

## SECURITY FEATURES

- 24-HOUR CONCIERGE
- 24-HOUR SECURITY CAMERAS IN SELECT GARAGE/PARKING AREAS
- CLOSED CIRCUIT CAMERA MONITORING AT SELECT BUILDING ENTRY POINTS
- ELECTRONIC COMMUNICATION SYSTEM IN LOBBY VESTIBULE PERMITS VISITORS TO COMMUNICATE WITH SUITE FROM BUILDING ENTRANCES

## ENERGY EFFICIENCY FEATURES

- ENERGY STAR APPLIANCES
- DUAL FLUSH TOILETS
- ENERGY EFFICIENT LIGHT BULBS
- WATER CONSERVING FAUCETS
- INDIVIDUALLY METERED HYDRO AND WATER

PLEASE SEE PROVISIONS IN SCHEDULE A RELATING TO PURCHASER'S RIGHTS TO SELECT FINISHES AND VENDOR'S RIGHTS TO INSTALL SUBSTITUTE MATERIALS AND FINISHES \*

COLOURS AND/OR MATERIALS TO BE SELECTED FROM VENDOR'S STANDARD SAMPLE PACKAGES, AS PROVIDED FOR BELOW. VENDOR SHALL NOT BE RESPONSIBLE FOR SHADE DIFFERENCES OCCURRING FROM DIFFERENT DYE LOTS.

\*\* IF APPLICABLE

\*\*\* AS PER PLAN

\*\*\*\* EXCEPT BATHROOMS, LAUNDRY, BULKHEADS AND DROP CEILINGS FOR MECHANICAL SYSTEMS, AS REQUIRED \*\*\*\*\*

FLOORS 7, 27, AND 46 APPROXIMATE CEILING HEIGHT OF 10'; FLOOR 47 APPROXIMATE CEILING HEIGHT OF 10'6" \*\*\*\*\*

KITCHEN TYPES VARY AND IS AS PER PLAN.

(1) THE VENDOR SHALL HAVE THE RIGHT TO MAKE ALTERATIONS TO THE SELECTION AND SPECIFICATIONS RELATING TO ENERGY EFFICIENT FEATURES.

DATED: SEPTEMBER 1, 2021

WITH A PRIME POSITION IN THE  
HEART OF THE ENTERTAINMENT  
DISTRICT, THERE'S ALWAYS  
SOMETHING ON.

# TAKE LIFE TO THE LIMITS

EXCITING AND  
EXHILARATING, THIS  
IS A NEIGHBOURHOOD  
WHERE ENTERTAINMENT  
TAKES ON EVERY  
FORM – FROM SPORTS  
TO ARTS, FILM, MUSIC,  
LIVE THEATRE, COMEDY,  
GOURMET DINING,  
DESIGNER SHOPPING  
AND MORE. CULTURE  
MEETS COOL AND  
STYLE RADIATES FROM  
EVERY BLOCK.



INSPIRED BY ONE OF THE CITY'S  
BIGGEST MOVERS AND SHAKERS,  
NATASHA THE RESIDENCES PUTS YOU  
RIGHT IN THE HEART OF THE ACTION.  
STEP OUTSIDE AMID AN AMAZING  
LINEUP OF BARS, RESTAURANTS,  
COFFEE SHOPS, BUSINESSES,  
AND BOUTIQUES.





6AM

COFFEE AND CUDDLES WITH MY DOG - A MORNING RITUAL I CAN'T LIVE WITHOUT.



7AM

A GREAT WORKOUT IS NEXT ON THE AGENDA. AT THE RESIDENCES I WOULD DEFINITELY TAKE ADVANTAGE OF THE PERSONAL WORKOUT PODS IN THE INDUSTRIAL-STYLE GYM - THE ABILITY TO BE IN TORONTO AND STILL TAKE A CLASS, ON-DEMAND, WITH SOME OF MY FAVOURITE TRAINERS FROM AROUND THE WORLD? SIGN ME UP!



9AM

ARRIVE AT THE NKPR OFFICES ON ADELAIDE. STOP IN AT O&B CANTEEN FOR A COFFEE ON ICE EN ROUTE.

10AM

MEETINGS BEGIN. THE NKPR TEAM ARE THE HARDEST WORKING AND SMARTEST PROS IN THE INDUSTRY AND WE'RE CONSTANTLY JUGGLING A MULTITUDE OF HIGH-PROFILE PROJECTS, EVENTS, AND CLIENTS LIKE FLOW, SWAROVSKI AND ELLIE MAE.



1PM

LUNCH AT FIGO WHERE I'M PROBABLY ORDERING THE ZUCCHINI FRITTI WITH EXTRA HONEY. IT'S ABSOLUTELY INCREDIBLE.



4PM

I'M CONSTANTLY ON THE LOOKOUT FOR NEW COLLABORATIONS FOR SHOPNK, OUR SOCIALLY-CONSCIOUS, CURATED E-COMMERCE FASHION, BEAUTY AND ENTERTAINMENT SITE THAT FEATURES ALL MY FAVOURITE BRANDS, WITH A PORTION OF PROCEEDS GOING TO A LOCAL CHARITY OF YOUR CHOICE.

6PM

AS AN INTROVERT, I ALWAYS NEED A LITTLE TIME FOR MYSELF. ONE OF THE STUNNING INDOOR AND OUTDOOR LOUNGES AT THE RESIDENCES WOULD BE THE PERFECT SPOT.



7PM

I LOVE TO ENTERTAIN - EVERYTHING FROM SUPER FORMAL DINNER PARTIES TO IMPROMPTU PIZZA NIGHTS. I CAN PICTURE THE POSSIBILITIES IN THE PRIVATE DINING SPACES AT THE RESIDENCES. THE GRAND DINING ROOM IS DESIGNED TO IMPRESS, WHILE THE INDOOR/ OUTDOOR KITCHEN WITH A PIZZA OVEN IS WHERE WE COULD PUT OUR PIZZAIOLO SKILLS TO THE TEST.

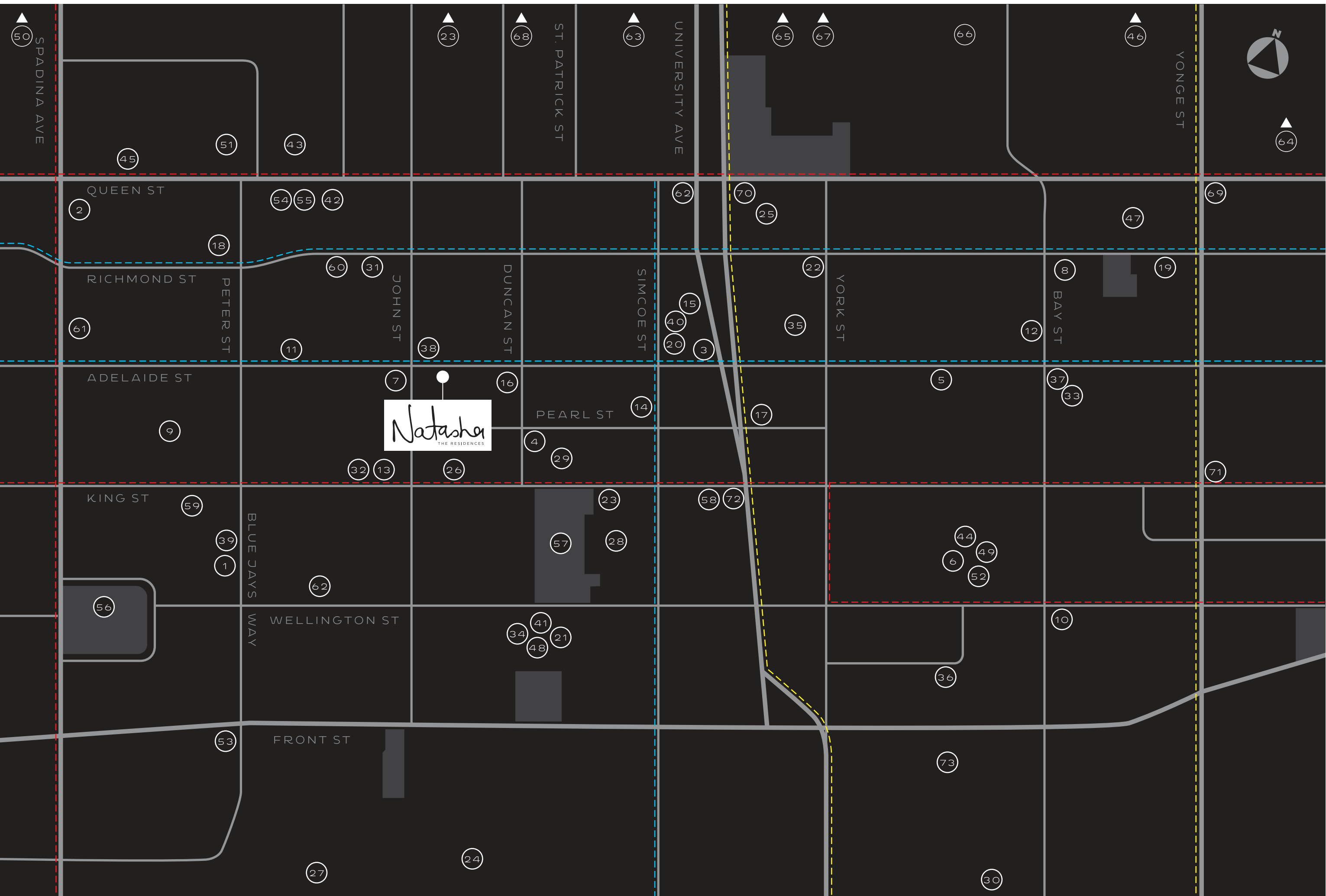


10PM

IN PR, THERE'S NO SUCH THING AS "BUSINESS HOURS" SO AT 10 O'CLOCK I MIGHT BE TAKING A CALL, RESPONDING TO EMAILS, OR - MOST LIKELY - AT AN EVENT. BUT NO MATTER WHAT THE EVENING BRINGS, IT'S ALWAYS AMAZING TO COME HOME, ESPECIALLY WHEN HOME IS A SPACE THAT WELCOMES AND INSPIRES YOU.



24 HOURS WITH NATASHA



FOOD & DINING

- 1. AKIRA BACK
- 2. ALO
- 3. BOSK
- 4. BYBLOS DOWNTOWN
- 5. CACTUS CLUB CAFE
- 6. CANOE
- 7. FIGO TORONTO
- 8. HY'S STEAKHOUSE & COCKTAIL BAR
- 9. KHAO SAN ROAD
- 10. KI MODERN JAPANESE + BAR
- 11. KIIN
- 12. LOCALE MERCATTO
- 13. LUMA
- 14. MICHAEL'S ON SIMCOE
- 15. MOMOFUKU NOODLE BAR
- 16. PAI
- 17. PIZZERIA LIBRETTO - UNIVERSITY
- 18. RICARDA'S RESTAURANT
- 19. RICHMOND STATION
- 20. SOHO HOUSE
- 21. TOCA
- 22. VOLOS

SHOPPING

- 42. ARC'TERYX
- 43. ARITZIA
- 44. BITTER SWEET JEWELLERY
- 45. BLUBOHO
- 46. CF TORONTO EATON CENTRE
- 47. HUDSON'S BAY
- 48. JDD JEWELLERY LTD
- 49. JOHNSTON & MURPHY
- 50. KENSINGTON MARKET
- 51. MEC TORONTO
- 52. NUTRITION HOUSE
- 53. RABBA FINE FOODS
- 54. TIMBUK2
- 55. TITIKA ACTIVE COUTURE

RECREATION & FITNESS

- 56. CLARENCE SQUARE
- 57. DAVID PECAUT SQUARE
- 58. F45 TRAINING TORONTO DOWNTOWN
- 59. FIT FACTORY FITNESS
- 60. GOODLIFE FITNESS
- 61. SPINCO
- 62. YOUR HOUSE FITNESS

ENTERTAINMENT & LEISURE

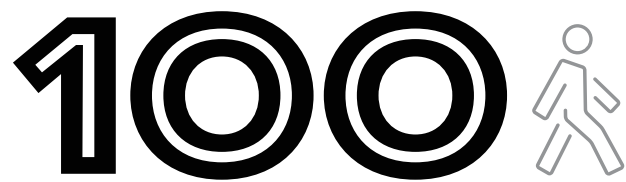
- 23. ART GALLERY OF ONTARIO
- 24. CN TOWER
- 25. FOUR SEASONS CENTRE FOR THE PERFORMING ARTS
- 26. PRINCESS OF WALES THEATRE
- 27. ROGERS CENTRE
- 28. ROY THOMSON HALL
- 29. ROYAL ALEXANDRA THEATRE
- 30. SCOTIABANK ARENA
- 31. SCOTIABANK THEATRE
- 32. TIFF BELL LIGHTBOX

SCHOOLS & SERVICES

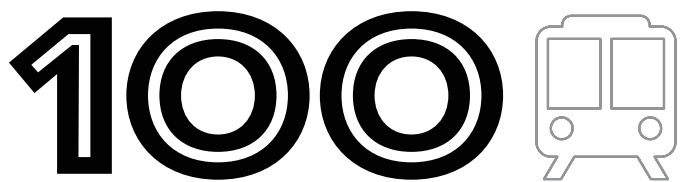
- 63. MOUNT SINAI HOSPITAL
- 64. RYERSON UNIVERSITY
- 65. SICKKIDS
- 66. TORONTO CITY HALL
- 67. TORONTO GENERAL HOSPITAL
- 68. UNIVERSITY OF TORONTO - ST. GEORGE CAMPUS

BARS & LOUNGES

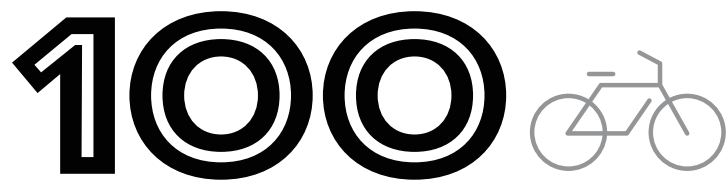
- 33. ASTOR LOUNGE
- 34. DEQ TERRACE AND LOUNGE
- 35. DRAKE ONE FIFTY
- 36. LIBRARY BAR
- 37. LOUX LOUIS
- 38. MELROSE ON ADELAIDE
- 39. MISTER C.
- 40. SHANGRI-LA LOBBY LOUNGE AND BAR
- 41. THE RITZ-CARLTON



WALK SCORE



TRANSIT SCORE



BIKE SCORE

SUBWAY LINE

STREETCAR ROUTE

CYCLING ROUTE



“

WALK ALONG KING AND QUEEN  
WEST, STOPPING IN FOR THE  
OCCASIONAL CORTADO BEFORE  
HITTING THE NEXT SHOP.

”

CATCH A NEW CINEMATIC MASTERPIECE  
AT THE TIFF BELL LIGHTBOX, AND SEE THE  
STARS DESCEND ON YOUR NEIGHBOURHOOD  
COME FESTIVAL TIME. HEAD TO THE  
ROGERS CENTRE TO CHEER ON THE HOME  
TEAM OR HARBOURFRONT FOR A DAY ON  
THE LAKE. FROM THE FASHION DISTRICT TO  
THE FINANCIAL DISTRICT, EVERYTHING IS  
CLOSE AT HAND.





# A DYNAMIC, URBAN VISION

LANTERRA'S MISSION IS TO CREATE LANDMARK URBAN CONDOMINIUM COMMUNITIES CHARACTERIZED BY OUTSTANDING LOCATION, ICONIC ARCHITECTURE AND DESIGN, INSPIRED AMENITIES AND INNOVATIVE TECHNOLOGIES - ALL AT AN UNMATCHED VALUE.

LANTERRA DEVELOPMENTS WAS FOUNDED BY MARK MANDELBAUM AND BARRY FENTON, TWO REAL ESTATE VISIONARIES WHO BEGAN WITH A DREAM TO DEVELOP INNOVATIVE, ONE-OF-A-KIND DOWNTOWN CONDOMINIUM PROPERTIES. OVER 20 YEARS, WE HAVE

CHARTED AN AMAZING SUCCESS STORY ON THE TORONTO SKYLINE WITH ONE ICONIC CONDOMINIUM AFTER ANOTHER, SCALING NEW HEIGHTS IN DESIGN, STYLE AND ELEGANT URBAN LIVING. OUR GUIDING PHILOSOPHY GOES BEYOND JUST CONDOMINIUM BUILDING TO DYNAMIC URBAN REVITALIZATION AND PUTTING TORONTO ON THE GLOBAL MAP AS THE NEW CITY OF THE FUTURE, WITH VIBRANT MASTER PLANNED MIXED USE COMMUNITIES, SUSTAINABLE GREEN LIVING AND CUTTING-EDGE ENVIRONMENTAL TECHNOLOGIES.



**BDP.**  
**Quadrangle**



BDP QUADRANGLE CAN BE SUMMED UP IN TWO WORDS: INSPIRATION REALIZED. FOR NEARLY 35 YEARS THIS FULL-SERVICE ARCHITECTURE FIRM HAS BEEN SHAPING THE CITY SKYLINE WITH AWARD-WINNING PROJECTS THAT INCLUDE COMMERCIAL, MIXED-USE, MULTI-UNIT RESIDENTIAL, CONTENT MEDIA, AND RETAIL MARKETS. THEY DESIGN SPACES WHERE PEOPLE LIVE, WORK, AND PLAY, WHERE BEAUTY AND BUSINESS GO HAND IN HAND, AND WHERE CREATIVE DESIGN AND SUSTAINABILITY ARE INSEPARABLE. USING LIGHT, SPACE, MATERIALS, AND MOVEMENT, THE FIRM HELPS REDEFINE THE HUMAN EXPERIENCE. NOW, IN PARTNERSHIP WITH GLOBAL ARCHITECTURE, DESIGN, AND ENGINEERING FIRM BDP QUADRANGLE EXTENDS ITS INTERNATIONAL REACH, JOINING A NETWORK OF 1,300 PROFESSIONALS COLLABORATING ACROSS STUDIOS IN THE UK, CHINA, INDIA, IRELAND, THE MIDDLE EAST, THE NETHERLANDS, AND SINGAPORE.

**STUDIO**  
**MUNGE**



WITH BEAUTY AND CRAFTSMANSHIP IN HIS DNA, IT SEEMS PREDESTINED THAT ITALIAN DESIGNER ALESSANDRO MUNGE WOULD GROW UP TO BECOME ONE OF NORTH AMERICA'S MOST SOUGHT-AFTER CREATIVE TALENTS FOR INTERIOR DESIGN. DRIVEN BY AN INQUISITIVE NATURE AND A DESIRE TO PROVOKE PROFOUND EMOTION THROUGH THREE-DIMENSIONAL ENVIRONMENTS, ALESSANDRO HAS RESHAPED THE PRECONCEIVED NOTIONS OF INTERIOR DESIGN FOR OVER 20 YEARS. HIS INNOVATIVE POINT OF VIEW EARNED HIM CONTRACT MAGAZINE'S DESIGNER OF THE YEAR AWARD, AND HAS STRENGTHENED HIS TIES TO SOME OF THE WORLD'S MOST ICONIC HOSPITALITY BRANDS AND LUXURY CLIENTS. HIS MULTIDISCIPLINARY FIRM, STUDIO MUNGE, IS RECOGNIZED ACROSS THE GLOBE FOR MASTERFUL STORYTELLING THROUGH DESIGN, IMBUING EVERY PROJECT WITH PURPOSE AND BEAUTY IN EQUAL MEASURE.

**NAK** ■  
design strategies



THOUGH BASED IN TORONTO, NAK DESIGN STRATEGIES' UNIQUE LANDSCAPE ARCHITECTURE CAN BE SEEN AROUND THE WORLD WITH PROJECTS ACROSS CANADA AND IN CHINA, THAILAND, THE US, AND THE CARIBBEAN. THE FIRM USES A DESIGN PROCESS THAT EXPERTLY MARRIES THE UNIQUE CHARACTERISTICS OF A SITE WITH A DEEP UNDERSTANDING OF ITS PROGRAMME REQUIREMENTS, A PHILOSOPHY THAT HAS RESULTED IN SPECTACULAR AND AWARD-WINNING PROJECTS LIKE THE GARDINER MUSEUM OF CERAMIC ARTS, BELL LIGHTBOX AND FESTIVAL TOWER, THE CHEDDINGTON, AND ONE POST ROAD.





