

QueenCentral

CONDOMINIUMS

Microsoft
Head Office

Google
Head Office

Amazon
Head Office

Union
Station

Financial District



St. Michael's
Hospital

Queen
Subway
Station

Eaton Centre

City Hall
+
Nathan
Phillips
Square

CONDOMINIUMS
STEPS TO

yonge
queen

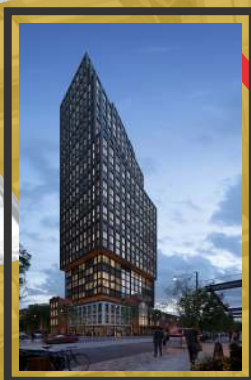
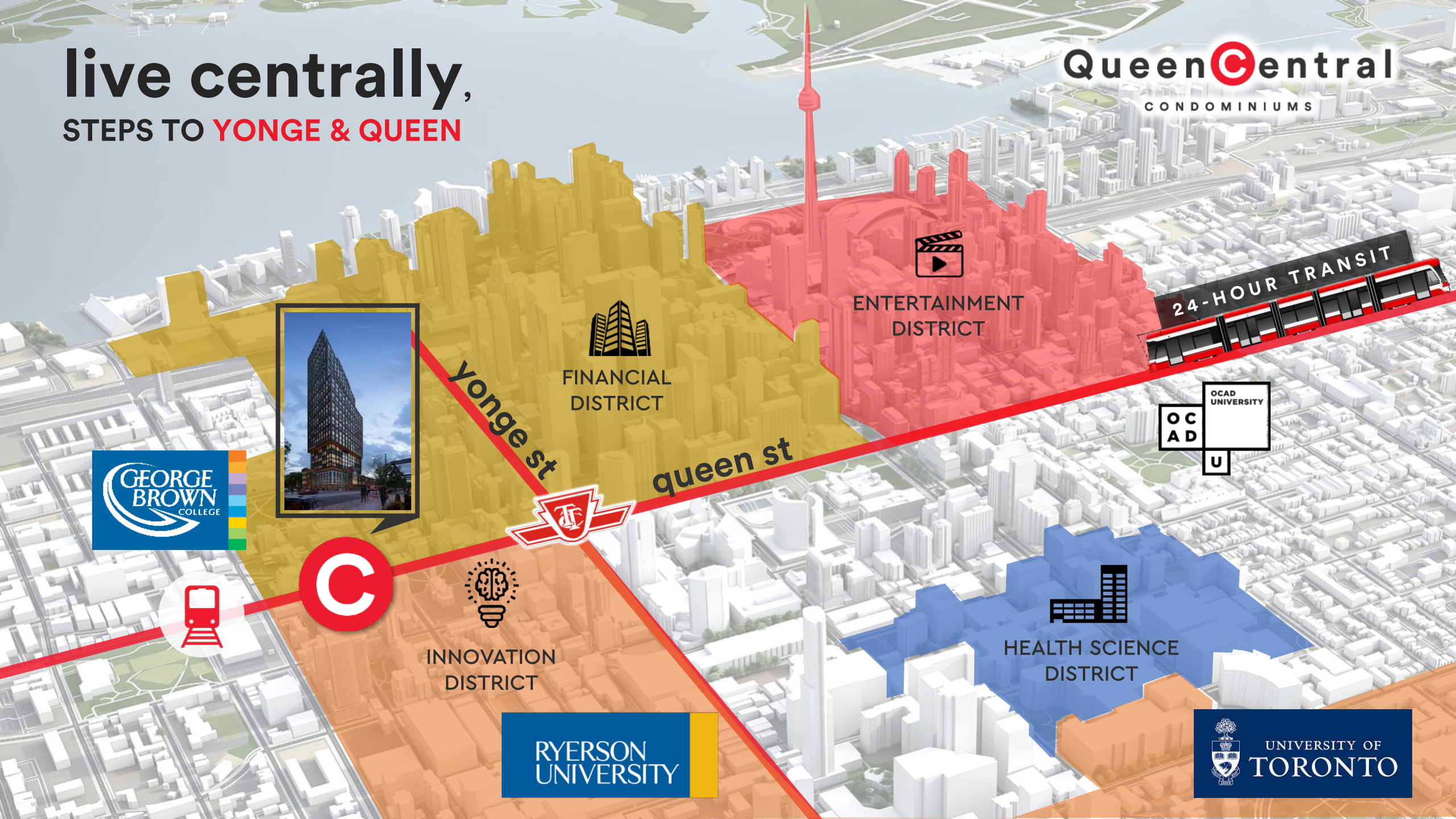
Illustration is artist's concept. E.&O.E.



live centrally,

STEPS TO **YONGE & QUEEN**

QueenCentral
CONDOMINIUMS



Yonge st

Queen st

FINANCIAL DISTRICT

ENTERTAINMENT DISTRICT

OCAD UNIVERSITY



INNOVATION DISTRICT

HEALTH SCIENCE DISTRICT



ONTARIO LINE: THE NEW **YONGE & BLOOR**

Queen**C**entral
CONDOMINIUMS



15 new stations along 16km from the Exhibition Place to the Science Centre



17 connections to other transit lines



Estimated **\$11B investment**



Toronto's newest main **east-west transit** thoroughfare



A new subway station will sit **150m from Queen Central**

transit

Centric



— LINE 1 — LINE 2 — LINE 5 — ONTARIO LINE ●● TRANSFER POINT

THE FINANCIAL DISTRICT: EXPANDING EAST OF YONGE ST

Top 10
Global Stock Exchange

2nd Largest
Financial Centre in North America

45+ Buildings
In the Financial District

Ranks 6th
Globally in Total Bank Assets

\$10 Trillion
In Assets Held By Canadian Financial
Institutions & Pension Funds

growth
centric



DOWNTOWN TORONTO: HOME TO **DIGITAL GIANTS**

2nd Tech Creator

In North America

4th Tech Talent

Market Among 50 Cities

250K+ Tech Workers

Representing 8.8% of Toronto's workforce

Brain Gain

Toronto has more jobs than tech degrees

Queen**C**entral
CONDOMINIUMS



tech
Centric





LOBBY

Illustration is artist's concept. E.&O.E.

Queen**C**entral



CHEF-INSPIRED KITCHEN

Illustration is artist's concept. E.&O.E.

QueenCentral



WEST TERRACE

Illustration is artist's concept. E.&O.E.

Queen **C**entral



INTERIOR SUITE

Illustration is artist's concept. E.&O.E.

QueenCentral

An architectural rendering of a multi-story building. The central portion features a historic brick facade with a large arched window and the name 'RICHARD BIGLEY' above it. The address '100 Queen St E.' is visible on the ground floor. To the left is a modern 'LOWER TOWER' with a grey stone facade and a rooftop terrace. To the right is another brick building housing 'BLOOM BISTRO'. Callout boxes highlight features like 'HERITAGE FACADES PRESERVED', 'OUTDOOR TERRACES OVERLOOKING QUEEN ST', 'CORNER LOT DEVELOPMENT EXPANSIVE VIEWS STEPS TO YONGE & QUEEN', 'ICONIC QUEEN ST ADDRESS', and 'RETAIL ON GROUND FLOOR'. The 'QueenCentral' logo is in the bottom right.

HERITAGE FACADES PRESERVED

OUTDOOR TERRACES
OVERLOOKING QUEEN ST

CORNER LOT DEVELOPMENT
EXPANSIVE VIEWS
STEPS TO **YONGE & QUEEN**

ICONIC QUEEN ST ADDRESS

RETAIL ON GROUND FLOOR

LOWER TOWER

Illustration is artist's concept. E.&O.E.

Queen**C**entral