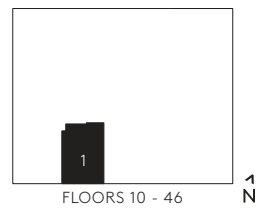
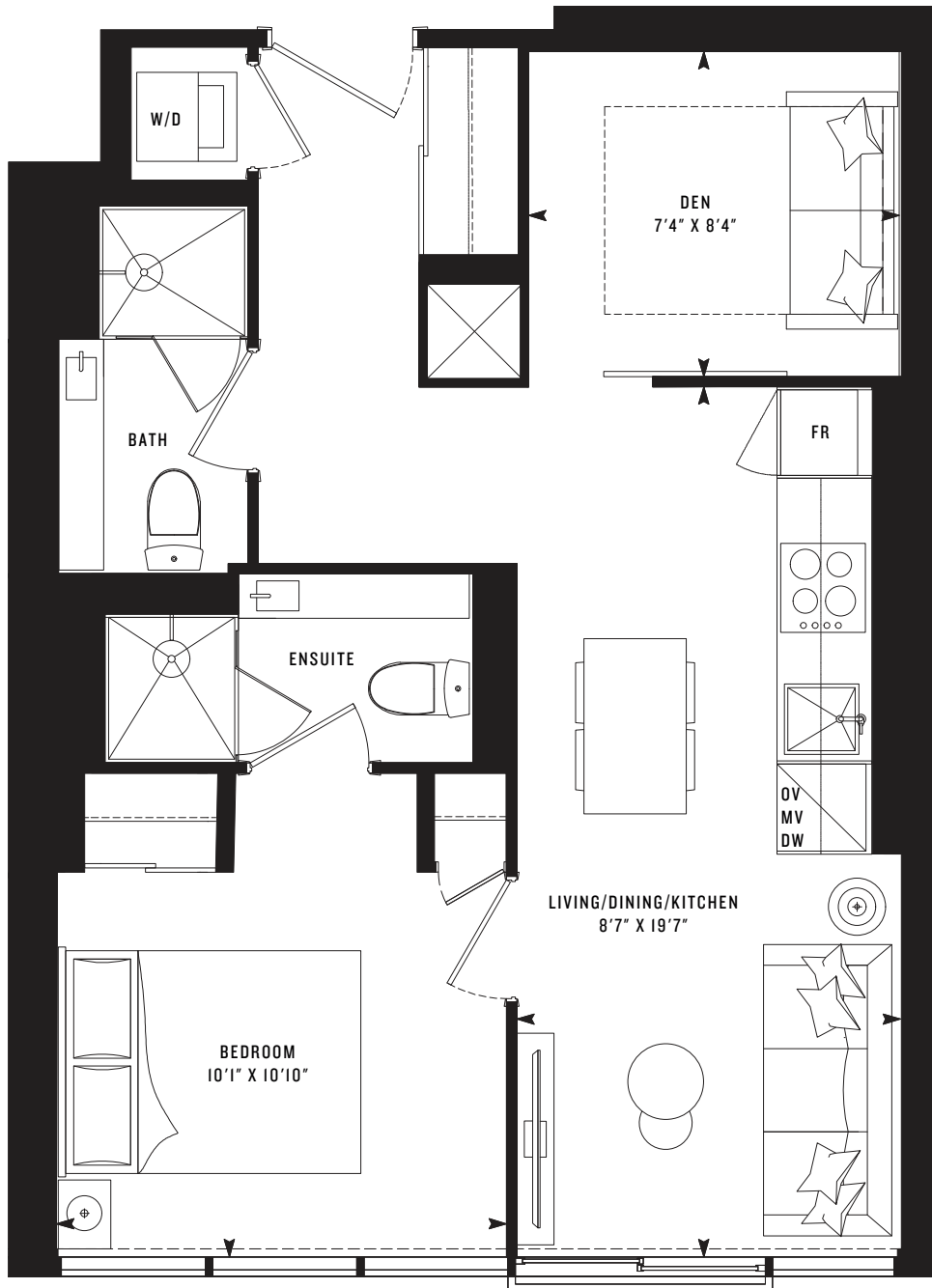


P  
R  
I  
M  
E

# PRIME 567

One Bedroom + Den  
567 SF



FLOORS 10 - 46  
1  
N

Note: All prices, figures, sizes, specifications and information are subject to change without notice. E. & O.E. All areas and stated dimensions are approximate. Actual usable floor space, living area and square footage may vary from stated floor area. All illustrations are artist's concept only. The unit shown may be the reverse of the unit purchased. Exterior building elements may be visible from within unit, including but not limited to mullion/metal panel/masonry placement, or other visual treatments. The purchase price does not include any furniture. © 2020 CentreCourt Developments. All rights reserved.

10 YEARS  
BUILDING  
TOWNSHIP  
SKYLINE

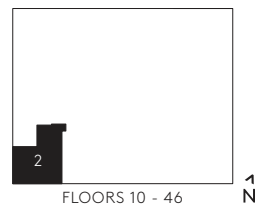
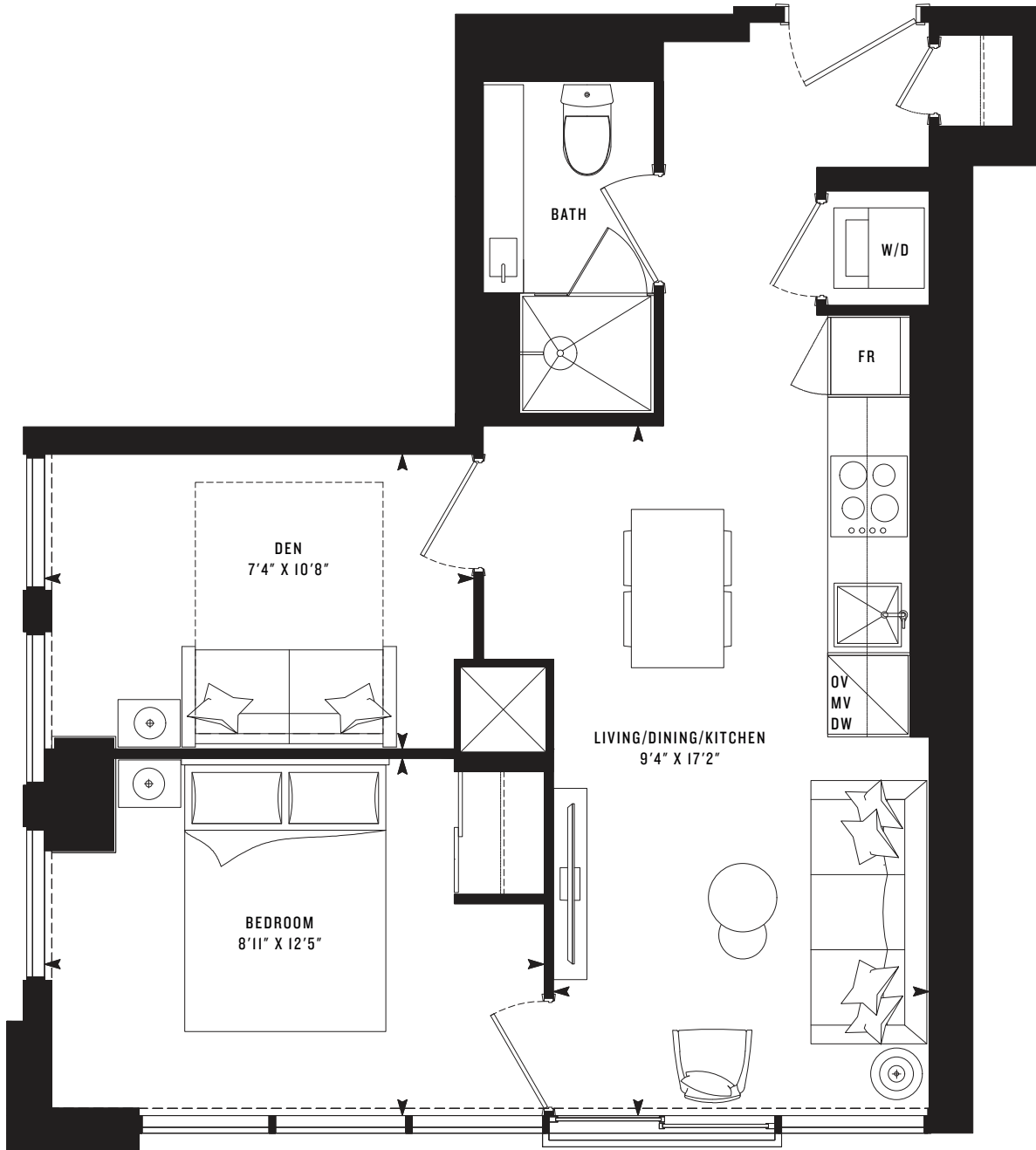
CENTRE COURT

CENTRESTONE

P  
R  
I  
M  
E

# PRIME 535

One Bedroom + Den  
535 SF



Note: All prices, figures, sizes, specifications and information are subject to change without notice. E. & O.E. All areas and stated dimensions are approximate. Actual usable floor space, living area and square footage may vary from stated floor area. All illustrations are artist's concept only. The unit shown may be the reverse of the unit purchased. Exterior building elements may be visible from within unit, including but not limited to mullion/metal panel/masonry placement, or other visual treatments. The purchase price does not include any furniture. © 2020 CentreCourt Developments. All rights reserved.

10 YEARS  
BUILDING  
TORONTO'S  
SKYLINE

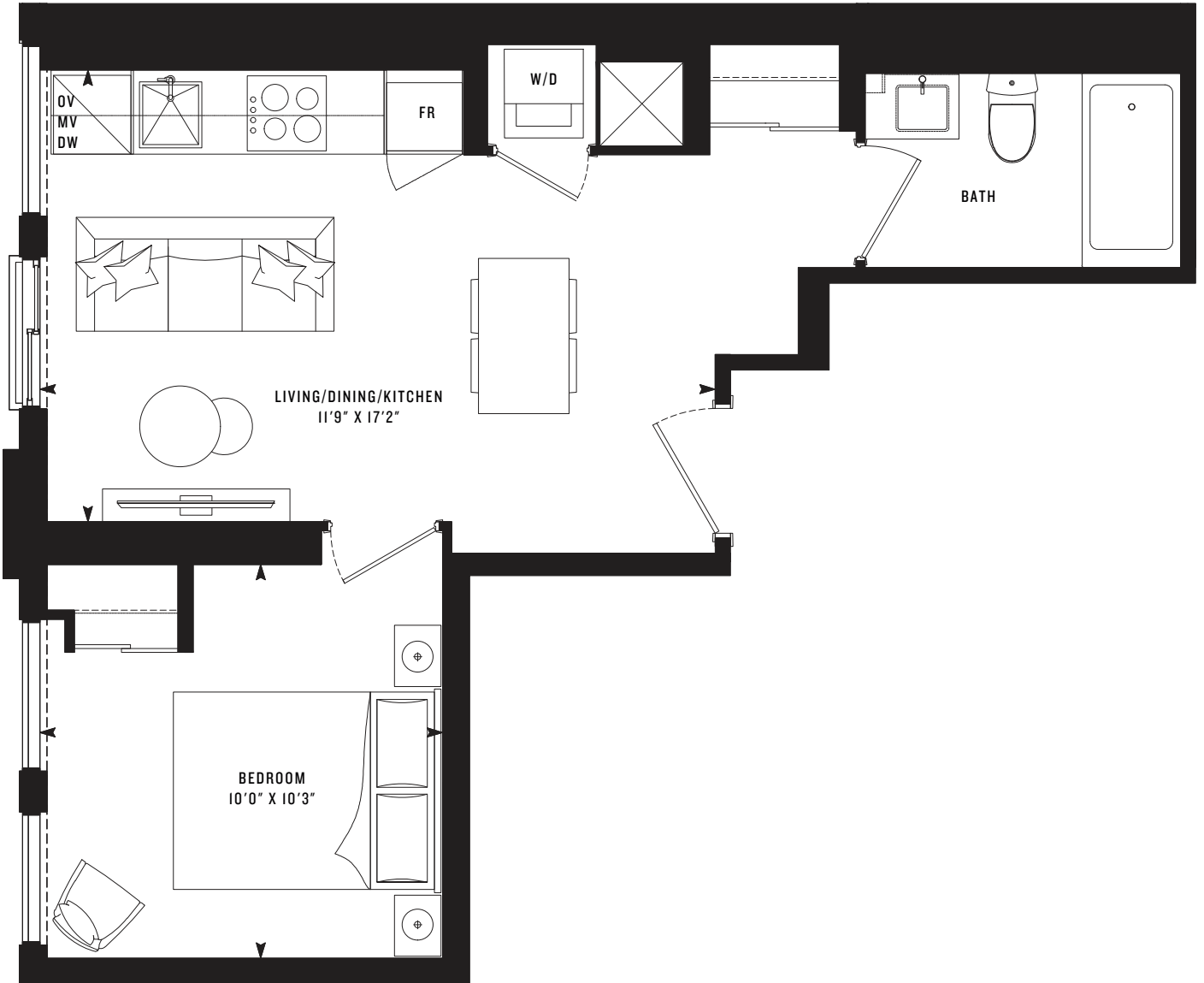
CENTRE COURT

CENTRESTONE

P  
R  
I  
M  
E

# PRIME 450

One Bedroom  
450 SF



FLOORS 10 - 46 1  
N

Note: All prices, figures, sizes, specifications and information are subject to change without notice. E. & O.E. All areas and stated dimensions are approximate. Actual usable floor space, living area and square footage may vary from stated floor area. All illustrations are artist's concept only. The unit shown may be the reverse of the unit purchased. Exterior building elements may be visible from within unit, including but not limited to mullion/metal panel/masonry placement, or other visual treatments. The purchase price does not include any furniture. © 2020 CentreCourt Developments. All rights reserved.

10 YEARS  
BUILDING  
TORONTO'S  
SKYLINE

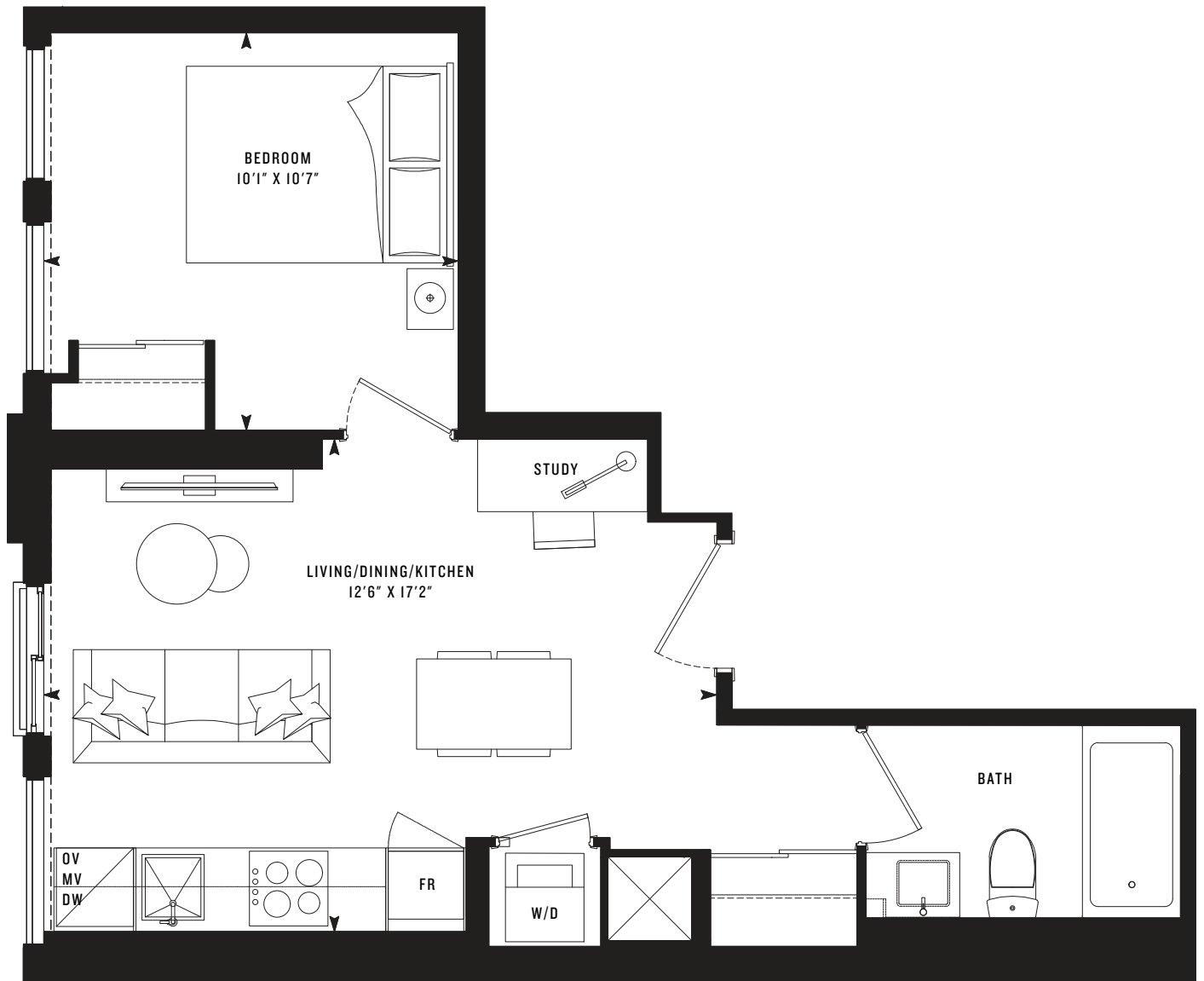
CENTRE COURT

CENTRESTONE

P  
R  
I  
M  
E

# PRIME 443

One Bedroom  
443 SF



FLOORS 5 - 45

Note: All prices, figures, sizes, specifications and information are subject to change without notice. E. & O.E. All areas and stated dimensions are approximate. Actual usable floor space, living area and square footage may vary from stated floor area. All illustrations are artist's concept only. The unit shown may be the reverse of the unit purchased. Exterior building elements may be visible from within unit, including but not limited to mullion/metal panel/masonry placement, or other visual treatments. The purchase price does not include any furniture. © 2020 CentreCourt Developments. All rights reserved.

10 YEARS  
BUILDING  
TORONTO'S  
SKYLINE

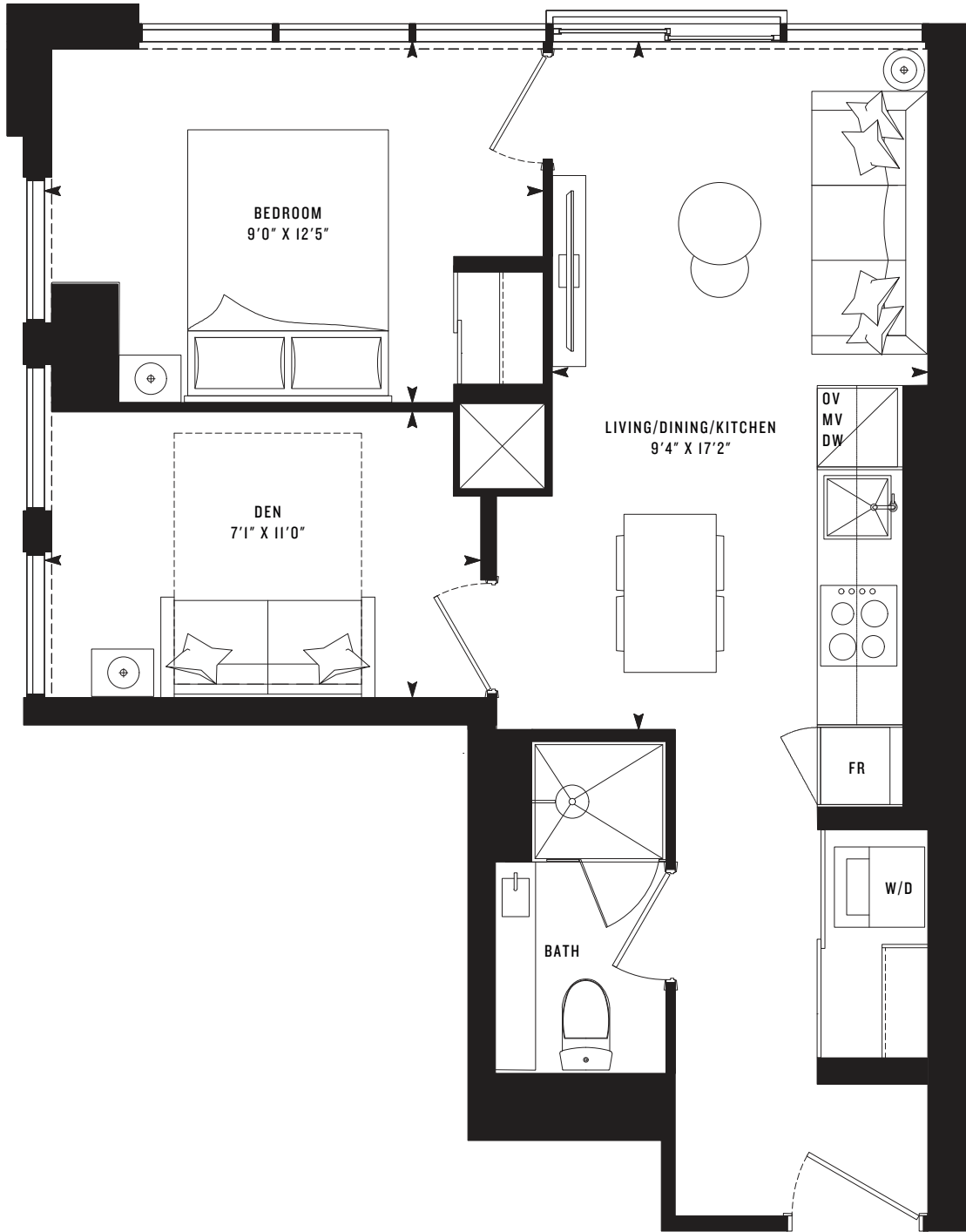
CENTRE COURT

CENTRESTONE

P  
R  
I  
M  
E

# PRIME 539

One Bedroom + Den  
539 SF



FLOORS 5 - 45

1  
N

Note: All prices, figures, sizes, specifications and information are subject to change without notice. E. & O.E. All areas and stated dimensions are approximate. Actual usable floor space, living area and square footage may vary from stated floor area. All illustrations are artist's concept only. The unit shown may be the reverse of the unit purchased. Exterior building elements may be visible from within unit, including but not limited to mullion/metal panel/masonry placement, or other visual treatments. The purchase price does not include any furniture. © 2020 CentreCourt Developments. All rights reserved.

10 YEARS  
BUILDING  
TORONTO'S  
SKYLINE

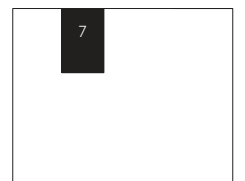
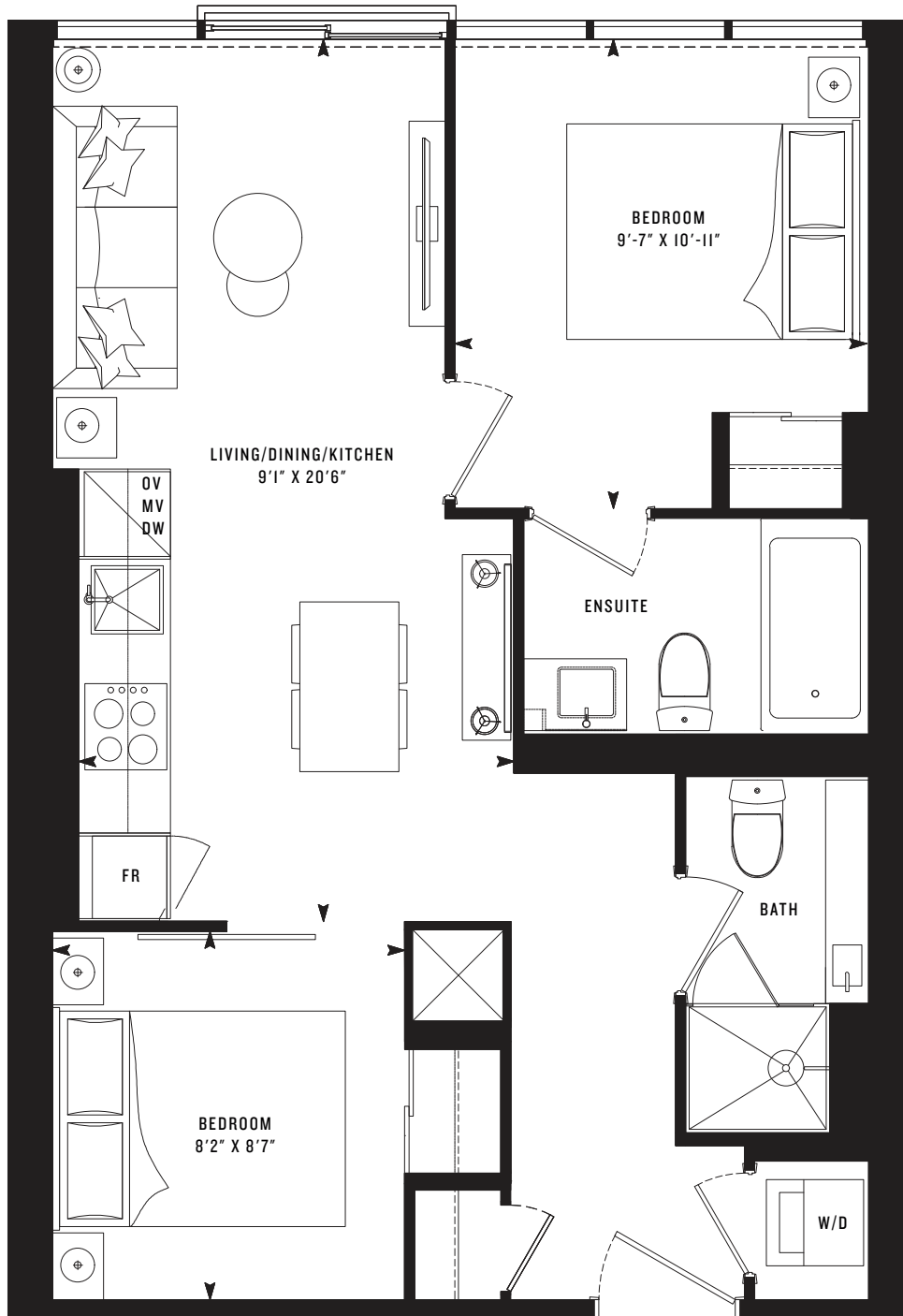
CENTRE COURT

CENTRESTONE

P  
R  
I  
M  
E

# PRIME 610

Two Bedroom  
610 SF



FLOORS 5 - 45

1  
N

Note: All prices, figures, sizes, specifications and information are subject to change without notice. E. & O.E. All areas and stated dimensions are approximate. Actual usable floor space, living area and square footage may vary from stated floor area. All illustrations are artist's concept only. The unit shown may be the reverse of the unit purchased. Exterior building elements may be visible from within unit, including but not limited to mullion/metal panel/masonry placement, or other visual treatments. The purchase price does not include any furniture. © 2020 CentreCourt Developments. All rights reserved.

10 YEARS  
BUILDING  
TOWARDS  
SKYLINE

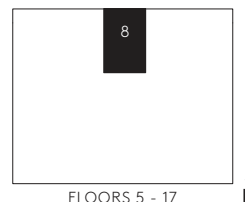
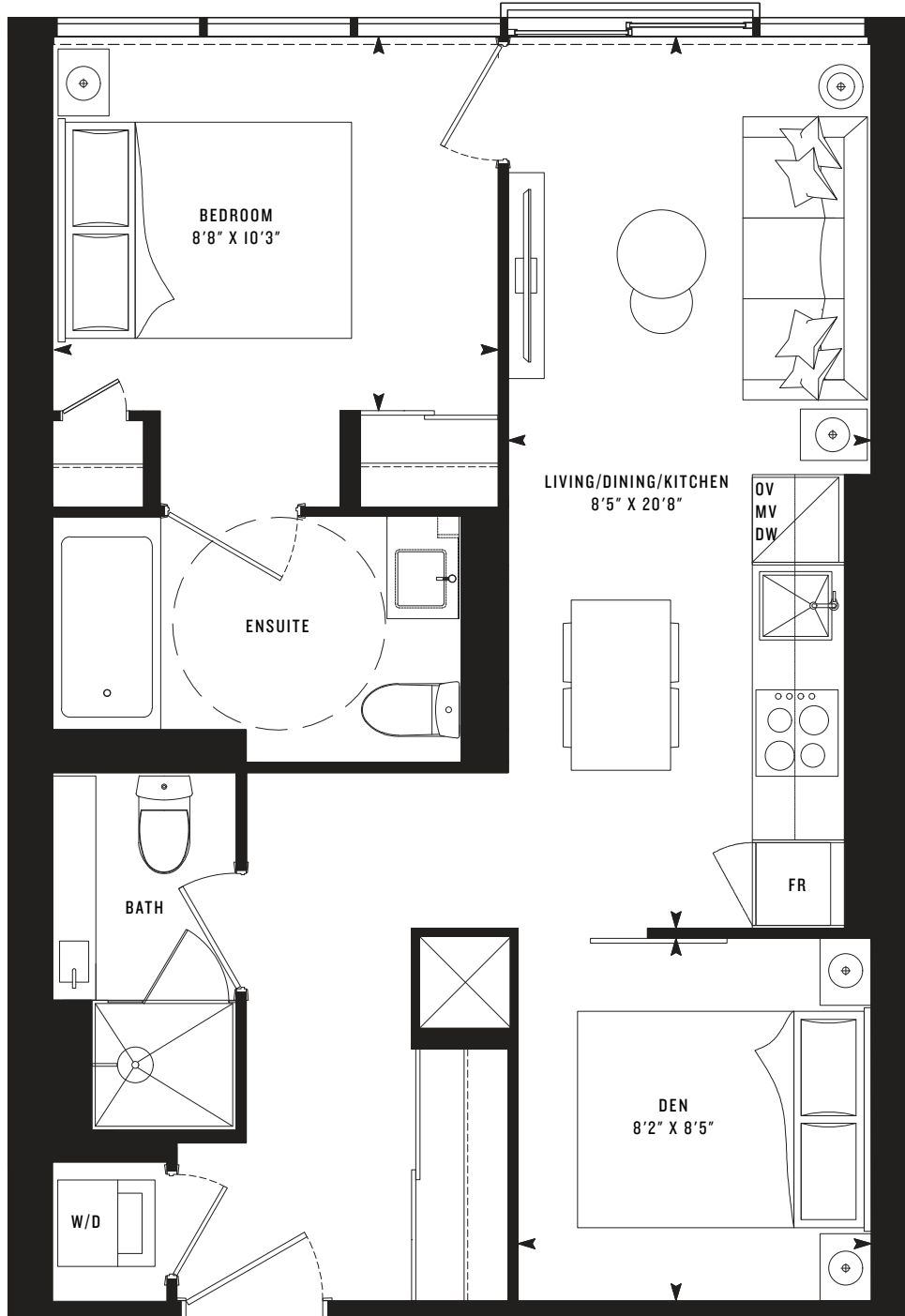
CENTRE COURT

CENTRESTONE

P  
R  
I  
M  
E

# PRIME 610(B)

One Bedroom + Den (BF)  
610 SF



Note: All prices, figures, sizes, specifications and information are subject to change without notice. E. & O.E. All areas and stated dimensions are approximate. Actual usable floor space, living area and square footage may vary from stated floor area. All illustrations are artist's concept only. The unit shown may be the reverse of the unit purchased. Exterior building elements may be visible from within unit, including but not limited to mullion/metal panel/masonry placement, or other visual treatments. The purchase price does not include any furniture. © 2020 CentreCourt Developments. All rights reserved.

10 YEARS  
BUILDING  
TOWARDS  
SKYLINE

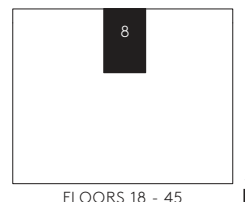
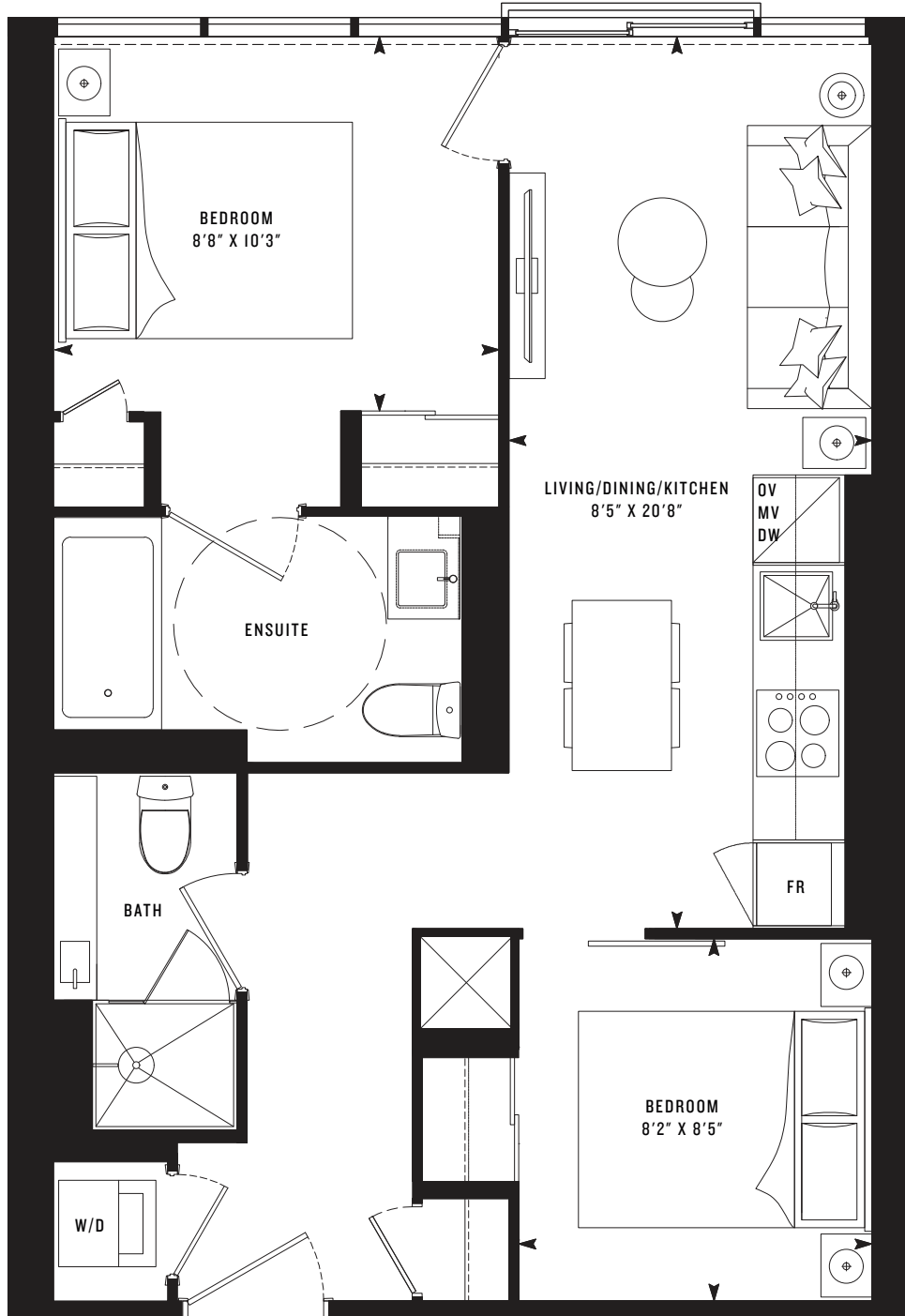
**CENTRE COURT**

**CENTRESTONE**

P  
R  
I  
M  
E

# PRIME 610(C)

Two Bedroom (BF)  
610 SF



FLOORS 18 - 45 <sup>1</sup><sub>N</sub>

Note: All prices, figures, sizes, specifications and information are subject to change without notice. E. & O.E. All areas and stated dimensions are approximate. Actual usable floor space, living area and square footage may vary from stated floor area. All illustrations are artist's concept only. The unit shown may be the reverse of the unit purchased. Exterior building elements may be visible from within unit, including but not limited to mullion/metal panel/masonry placement, or other visual treatments. The purchase price does not include any furniture. © 2020 CentreCourt Developments. All rights reserved.

10 YEARS  
BUILDING  
TORONTO'S  
SKYLINE

CENTRE COURT

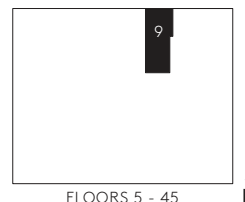
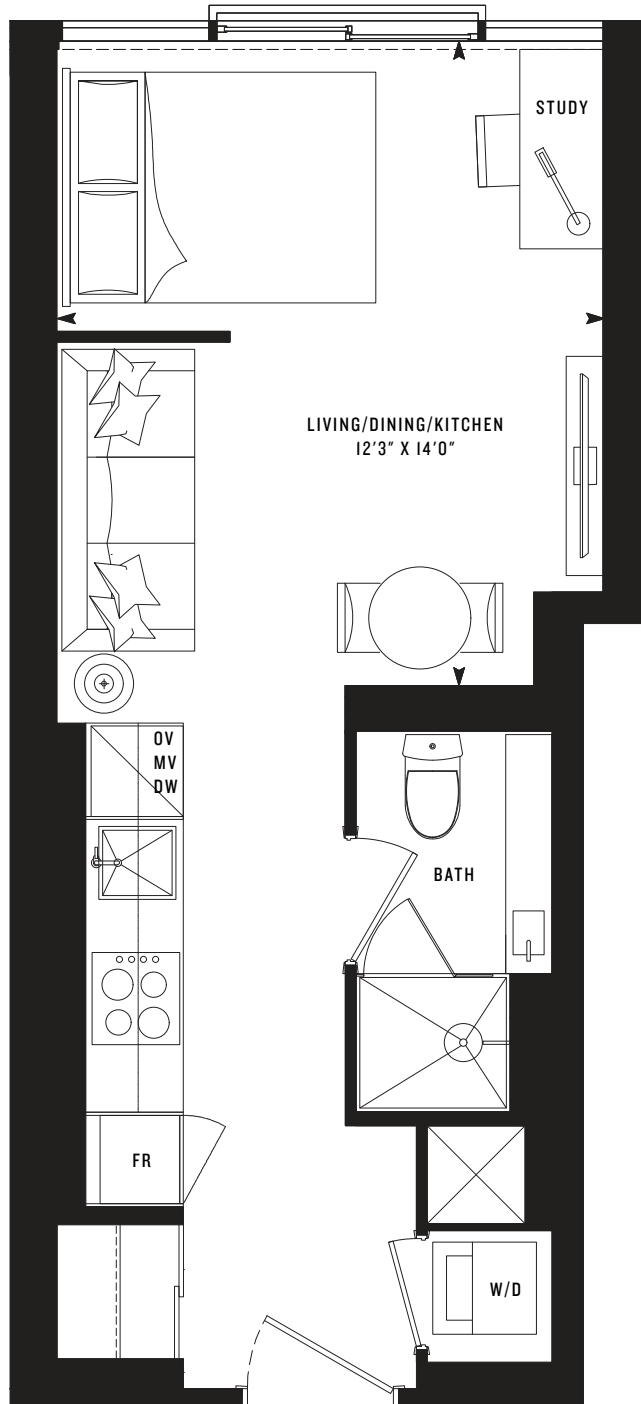
CENTRESTONE



P  
R  
I  
M  
E

# PRIME 370

Jr. One Bedroom  
370 SF



1  
N

Note: All prices, figures, sizes, specifications and information are subject to change without notice. E. & O.E. All areas and stated dimensions are approximate. Actual usable floor space, living area and square footage may vary from stated floor area. All illustrations are artist's concept only. The unit shown may be the reverse of the unit purchased. Exterior building elements may be visible from within unit, including but not limited to mullion/metal panel/masonry placement, or other visual treatments. The purchase price does not include any furniture. © 2020 CentreCourt Developments. All rights reserved.

10 YEARS  
BUILDING  
TORONTO'S  
SKYLINE

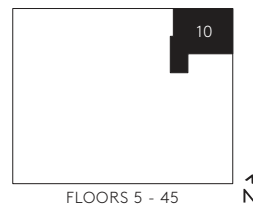
CENTRE COURT

CENTRESTONE

P  
R  
I  
M  
E

# PRIME 685

Two Bedroom  
685 SF



Note: All prices, figures, sizes, specifications and information are subject to change without notice. E. & O.E. All areas and stated dimensions are approximate. Actual usable floor space, living area and square footage may vary from stated floor area. All illustrations are artist's concept only. The unit shown may be the reverse of the unit purchased. Exterior building elements may be visible from within unit, including but not limited to mullion/metal panel/masonry placement, or other visual treatments. The purchase price does not include any furniture. © 2020 CentreCourt Developments. All rights reserved.

10 YEARS  
BUILDING  
TORONTO'S  
SKYLINE

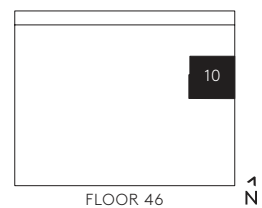
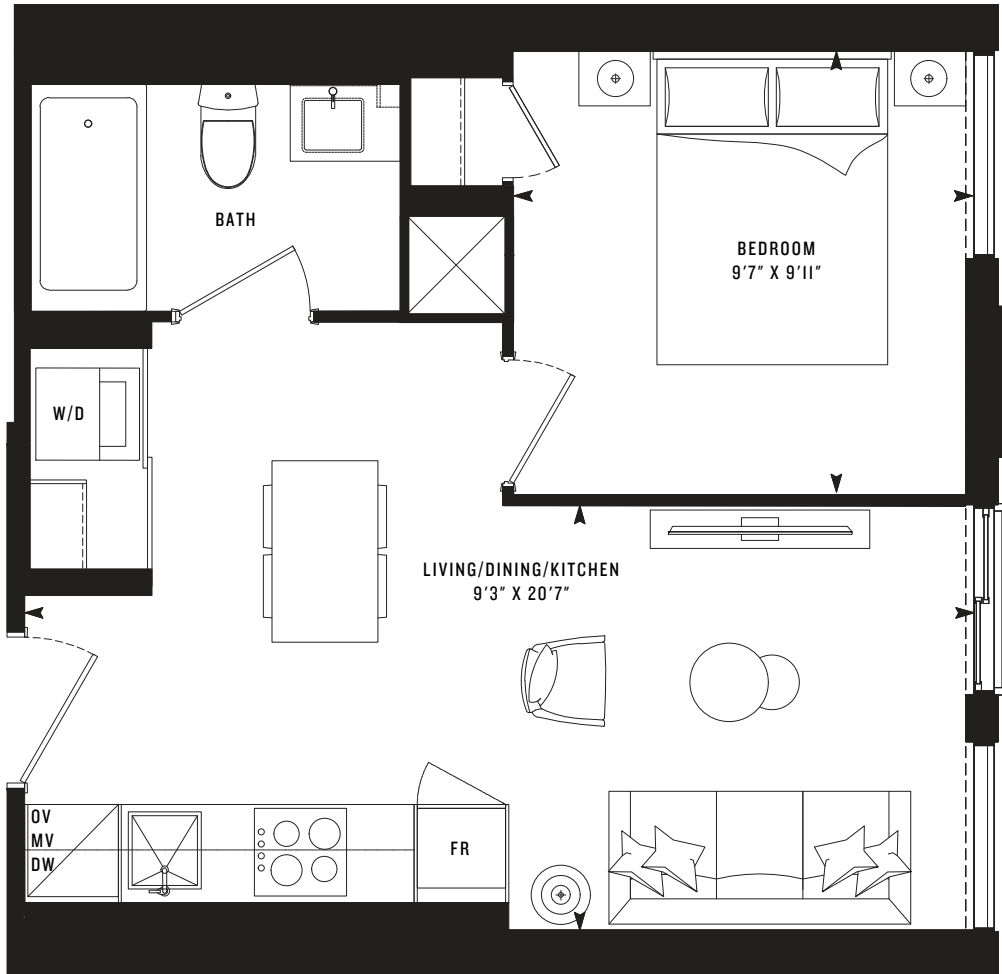
CENTRE COURT

CENTRESTONE

P  
R  
I  
M  
E

# PRIME 433

One Bedroom  
433 SF



1  
N

Note: All prices, figures, sizes, specifications and information are subject to change without notice. E. & O.E. All areas and stated dimensions are approximate. Actual usable floor space, living area and square footage may vary from stated floor area. All illustrations are artist's concept only. The unit shown may be the reverse of the unit purchased. Exterior building elements may be visible from within unit, including but not limited to mullion/metal panel/masonry placement, or other visual treatments. The purchase price does not include any furniture. © 2020 CentreCourt Developments. All rights reserved.

10 YEARS  
BUILDING  
TORONTO'S  
SKYLINE

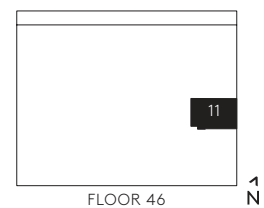
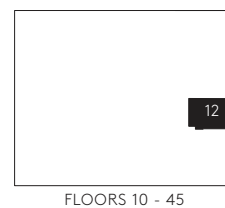
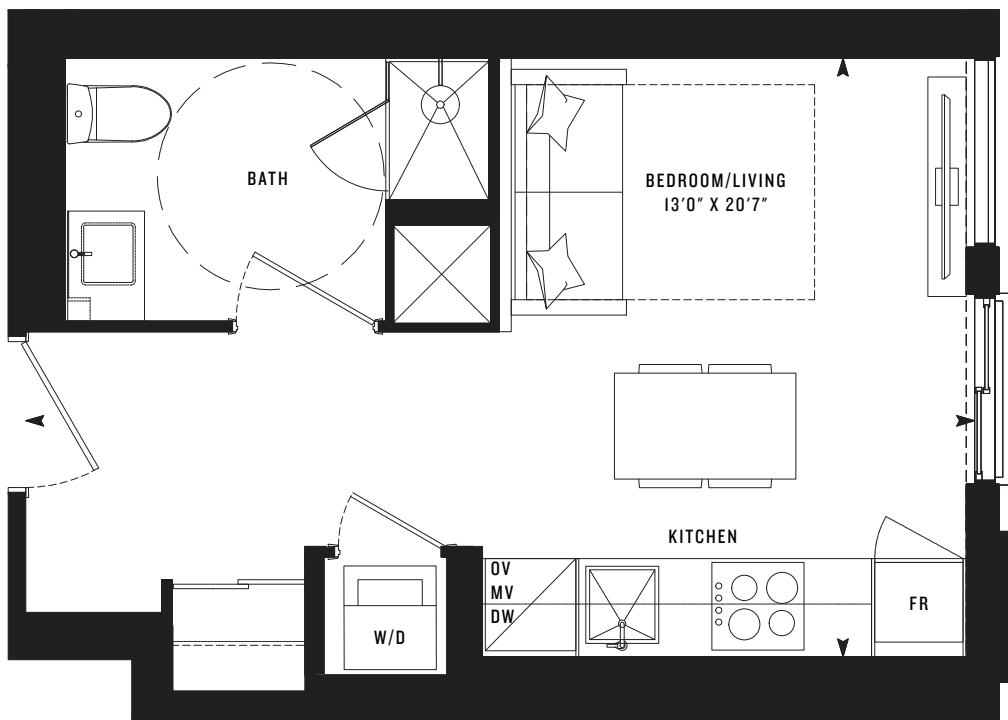
CENTRE COURT

CENTRESTONE

P  
R  
I  
M  
E

# PRIME 310

Studio (BF)  
310 SF



1  
N

Note: All prices, figures, sizes, specifications and information are subject to change without notice. E. & O.E. All areas and stated dimensions are approximate. Actual usable floor space, living area and square footage may vary from stated floor area. All illustrations are artist's concept only. The unit shown may be the reverse of the unit purchased. Exterior building elements may be visible from within unit, including but not limited to mullion/metal panel/masonry placement, or other visual treatments. The purchase price does not include any furniture. © 2020 CentreCourt Developments. All rights reserved.

10 YEARS  
BUILDING  
TORONTO'S  
SKYLINE

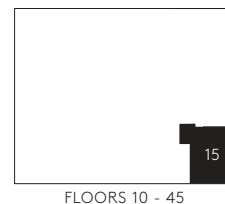
CENTRE COURT

CENTRESTONE

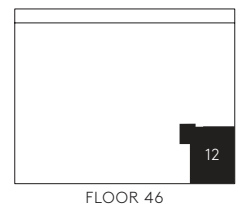
P  
R  
I  
M  
E

# PRIME 619

## Two Bedroom 619 SF



FLOORS 10 - 45



FLOOR 46

1  
N

Note: All prices, figures, sizes, specifications and information are subject to change without notice. E. & O.E. All areas and stated dimensions are approximate. Actual usable floor space, living area and square footage may vary from stated floor area. All illustrations are artist's concept only. The unit shown may be the reverse of the unit purchased. Exterior building elements may be visible from within unit, including but not limited to mullion/metal panel/masonry placement, or other visual treatments. The purchase price does not include any furniture. © 2020 CentreCourt Developments. All rights reserved.

10 YEARS  
BUILDING  
TOWNSHIP  
SKYLINE

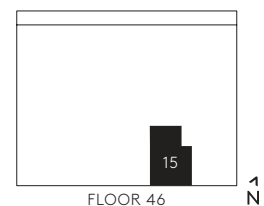
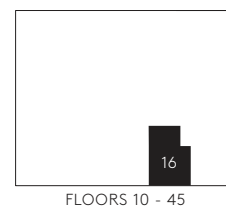
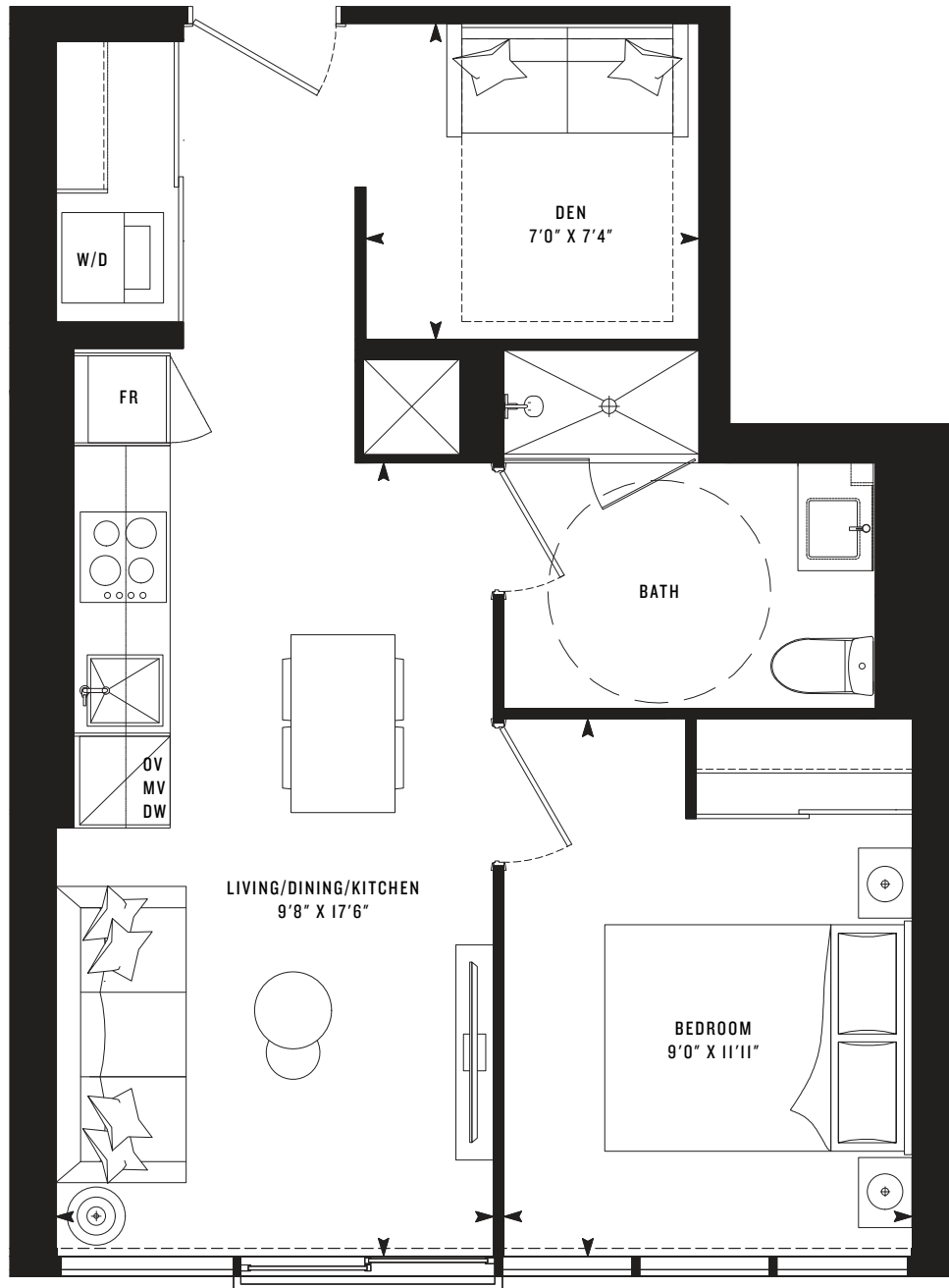
CENTRE COURT

CENTRESTONE

P  
R  
I  
M  
E

# PRIME 520

One Bedroom + Den (BF)  
520 SF



1  
N

Note: All prices, figures, sizes, specifications and information are subject to change without notice. E. & O.E. All areas and stated dimensions are approximate. Actual usable floor space, living area and square footage may vary from stated floor area. All illustrations are artist's concept only. The unit shown may be the reverse of the unit purchased. Exterior building elements may be visible from within unit, including but not limited to mullion/metal panel/masonry placement, or other visual treatments. The purchase price does not include any furniture. © 2020 CentreCourt Developments. All rights reserved.

10 YEARS  
BUILDING  
TOWARDS  
SKYLINE

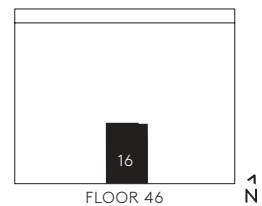
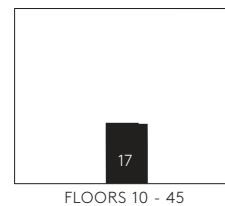
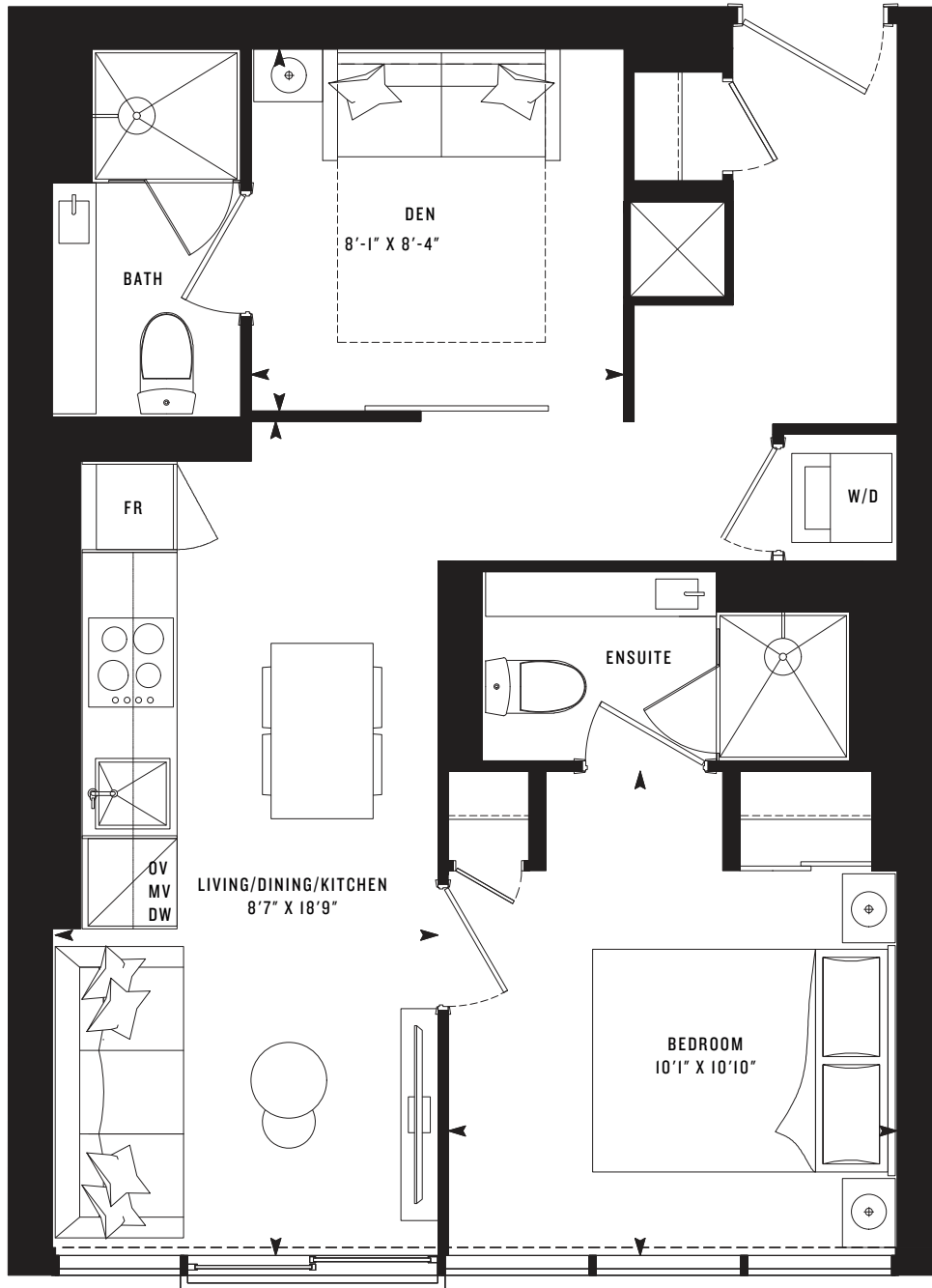
CENTRE COURT

CENTRESTONE

P  
R  
I  
M  
E

# PRIME 580

One Bedroom + Den  
580 SF



1  
N

Note: All prices, figures, sizes, specifications and information are subject to change without notice. E. & O.E. All areas and stated dimensions are approximate. Actual usable floor space, living area and square footage may vary from stated floor area. All illustrations are artist's concept only. The unit shown may be the reverse of the unit purchased. Exterior building elements may be visible from within unit, including but not limited to mullion/metal panel/masonry placement, or other visual treatments. The purchase price does not include any furniture. © 2020 CentreCourt Developments. All rights reserved.

10 YEARS  
BUILDING  
TOWARDS  
SKYLINE

CENTRE COURT

CENTRESTONE